



Hyde Guides

Here to Help You
Realise Your Dreams



Chestnut Terrace

Sultan Road, Lordswood, Chatham, Kent ME5 8TJ

One bedroom retirement homes
exclusively for the over 55s



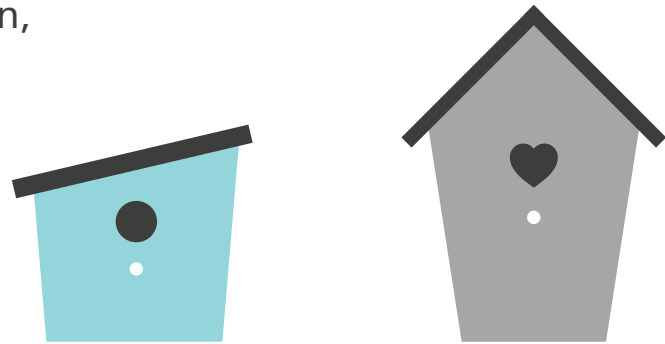
Hyde
New Homes

Welcome to Chestnut Terrace

Relaxing in the communal room with friends or having a quiet moment in the garden, Chestnut Terrace has it all.

A quick guide to the area:

- Chatham High Street shopping centre
- Libraries
- Good transport links
- Countryside, parks and woodlands
- Chatham's historic dockyard



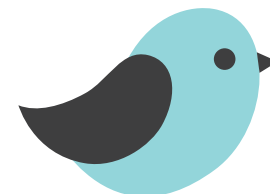
Making new friends

Chestnut Terrace is a development of 30 one bedroom homes located in Lordswood, just 100 yards from local shops and amenities.

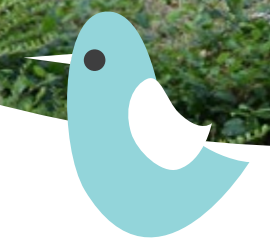
If you enjoy wildlife, then you will appreciate the communal gardens.

As you enter Chestnut Terrace, you will be welcomed by natural woodland gardens and plantings. At Chestnut Terrace residents, friends and family are invited to relax and enjoy the tranquil surroundings.

Opposite the development you will find a health centre and local shops.




Hyde Guides
Here to Help You
Realise Your Dreams



How the scheme works



If you are retired and aged over 55 you will be eligible to buy at Chestnut Terrace.

Having sold your present property, you can use the proceeds of the sale to purchase at Chestnut Terrace.

The properties are all leasehold.

A Government grant allows us to offer the apartments at a 30% discount on the full market value.

This is an assignment of the current lease.

Contact us

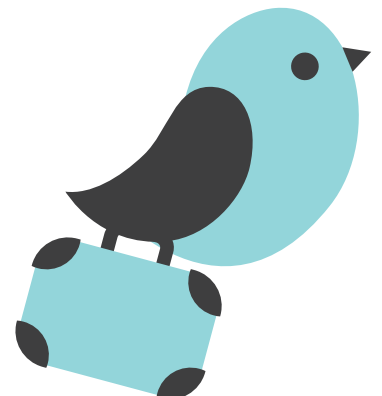
To find out more about Chestnut Terrace and join our mailing list, please contact Hyde New Homes:

Call: 0345 606 1221 Option 3

Email: resales@hydenewhomes.co.uk

or visit: www.hydenewhomes.co.uk

If you would like to visit Chestnut Terrace, please contact the Scheme Officer on 01634 200 851 and they will be happy to make an appointment with you.



Hyde
New Homes