



**Hyde**  
New Homes

# Riverside Square

City centre waterside living

**THE STOUR COLLECTION**



◀◀ **Apartment Locator**

See inside back cover



**WORLD  
LAND  
TRUST™**

[www.carbonbalancedprint.com](http://www.carbonbalancedprint.com)  
CBP2224

Welcome to Riverside Square

# **A new community** with City centre living

Dreaming about living in a new lifestyle quarter in historic Canterbury, which is close to the river and within easy reach of the vibrant city centre? With Riverside Square from Hyde New Homes, you can make this dream come true.

The Stour Collection at Riverside Square features a selection of 1, 2 & 3 bedroom apartments available through shared ownership boasting modern architecture, sleek interiors and contemporary finishes.

Situated within The Riverside, a new leisure quarter in Canterbury, Riverside Square's location is perfectly placed to allow you to enjoy tranquillity and peace in a beautifully designed home close to a picturesque stretch of the River Stour.

# The Riverside

## A new lifestyle quarter

Situated a short walk away from your front door, The Riverside is a new £115 million leisure-led destination. It forms an eastern extension to Canterbury's legendary The King's Mile district and is connected to the city centre by a main thoroughfare and a pleasant riverside walk.

### A centre of attraction

The heart of The Riverside is a new public square with open-air seating and areas to host pop-up events and cultural activities. It's the perfect place to meet up with friends and neighbours, enjoy some live entertainment or simply sit and soak up the atmosphere.



### Pop out for a drink or a meal

50,000 square feet of commercial space includes an assortment of bars, restaurants and fast food outlets, clustered around the main square. So you won't have to travel far to enjoy a morning coffee, afternoon tea, a drink after work, a pre-movie snack or an evening meal.



## Movie magic

Catch the latest Hollywood blockbusters, indie gems and film festival favourites at the five-screen Curzon cinema. The Curzon experience combines great movies with stylish decor, contemporary comforts, a bar and a sociable atmosphere.



Computer Generated Image of The Riverside

## Modern living in an historic location

Embark on a new chapter at Riverside Square with the Stour Collection. These thoughtfully designed 1, 2 & 3 bedroom apartments are superbly crafted with you in mind, addressing all the aspects of today's lifestyles. These homes provide a genuine opportunity to immerse yourself in the best of Canterbury, offering a blend of culture, convenience, and comfort.



A streetscene CGI showing Mallard House and Pipistrelle House at Riverside Square.



# Love living local

## Enjoy life in the city

Full of life and character, Canterbury combines a wealth of history with all the attractions and amenities of a modern metropolis. There's something for everyone, from shopaholics and sports fans to foodies, theatre buffs and culture seekers.

### Fabulous food and drink

With everything from cool bars and classic tearooms to trendy bistros and award-winning restaurants, Canterbury caters for all tastes and budgets. Enjoy a cappuccino and a pastry in an artisan coffee house, a pint and pie in a traditional pub or expertly-crafted dishes using fresh local produce in one of the many fine dining establishments.

### High-quality education

Canterbury offers high-quality educational facilities for all ages. St John's C of E Primary School is just a short walk from Canterbury Riverside and there are several state and independent secondary schools within easy reach, including Barton Court Grammar School and the historic King's School. The University of Kent's main campus is less than two miles from the development.



### Step back in time

Immortalised by 14th century author Geoffrey Chaucer, Canterbury is a treasure trove of history and heritage. The city's stunning Romanesque-Gothic cathedral, revered as the location of the martyrdom of Thomas Becket, is now part of a UNESCO World Heritage site, along with St Martin's Church and the ruins of St Augustine's Abbey. There are also fascinating insights into a different era of the city's heritage at the Canterbury Roman Museum



## A shopper's paradise

Canterbury offers a huge variety of shops, from top fashion and lifestyle brands to independent establishments specialising in fine art, jewellery, crafts and antiques. The pedestrianised High Street is lined with famous-name stores and the Whitefriars centre is one of the biggest retail destinations in Kent, packed with all kinds of outlets. For a more eclectic experience, there's The King's Mile, a network of streets beneath the soaring spires of the city's ancient Cathedral.

Canterbury High Street Market takes place on St George's Street every Wednesday and Friday and there's also the monthly Westgate Hall Market. The talents of Kent makers and artists are showcased via stalls selling a wide choice of crafts, homewares, jewellery and more.

## At your leisure

Be as active or laid-back as you want and choose from a huge range of activities to fill your time. Whether your routine includes gym sessions, cycling, yoga classes or swimming, you won't have to travel far to get your fitness fix.

If you prefer relaxing then the local parks and gardens are perfect for a stroll or a picnic, or take a Stour river trip to see the city from a different perspective.

1. Canterbury Cathedral
2. High quality education
3. Punting from Westgate Gardens
4. Artisan market
5. High street shopping
6. Local fitness classes

# Connections

## Access all areas

Riverside Square is well situated for access to major road links and public transport services, making it easy to travel throughout Kent and beyond.

Canterbury West and Canterbury East railway stations are both less than two miles from the development. From Canterbury West, Javelin high-speed train services run regularly to London St Pancras (journey time approximately 55 minutes), as well as Ramsgate and Margate. From Canterbury East, trains run hourly to London Victoria (via Chatham) and to Dover Priory.

The A28 connects Canterbury Riverside with the A2/M2 for London, the M25, the Dartford Crossing and Dover. The north Kent coastal towns of Whitstable and Herne Bay are also within easy driving distance.

1. Market Square, Faversham
2. Park fun in Canterbury
3. High Speed connections
4. Cycling around the city
5. Whitstable beach

### On Foot



<b>Curzon Cinema &amp; Leisure Complex</b>	2 mins
<b>Sainsbury's Superstore</b>	3 mins
<b>Kingsmead Leisure Centre</b>	5 mins
<b>Canterbury Cathedral</b>	5 mins
<b>Canterbury West Station</b>	15 mins
<b>Marlow Theatre/Cathedral</b>	15 mins
<b>Whitefriars Shopping Centre</b>	19 mins
<b>Bus Station</b>	20 mins
<b>Canterbury East Station</b>	20 mins

### By Bicycle



<b>Cathedral via The King's Mile</b>	3 mins
<b>Kingsmead Leisure Centre</b>	3 mins
<b>Whitefriars Shopping Centre</b>	5 mins
<b>Canterbury West Station</b>	6 min
<b>Canterbury East Station</b>	6 mins
<b>University of Kent</b>	14 mins

Above timings from postcode CT1 1JX  
All times sourced from google.com/maps



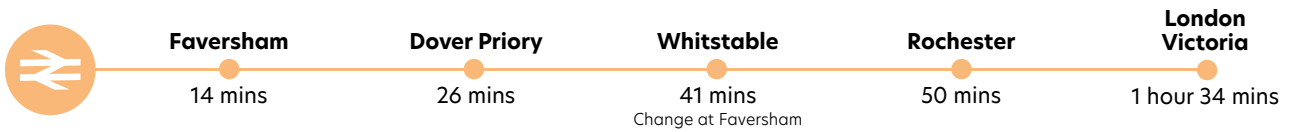
## By train from Canterbury West

Train times taken from nationalrail.co.uk



## By train from Canterbury East

Train times taken from nationalrail.co.uk



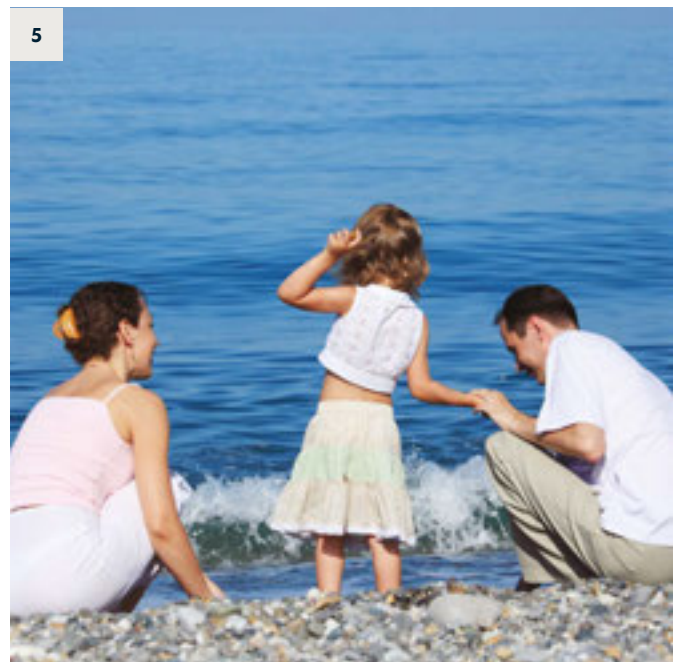
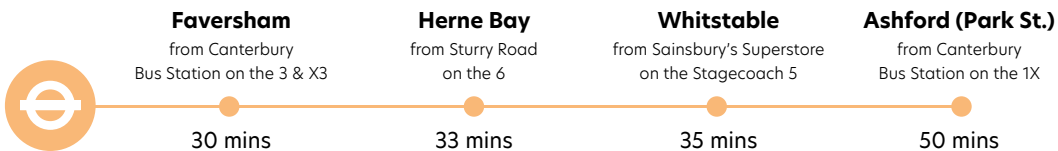
## By car or taxi

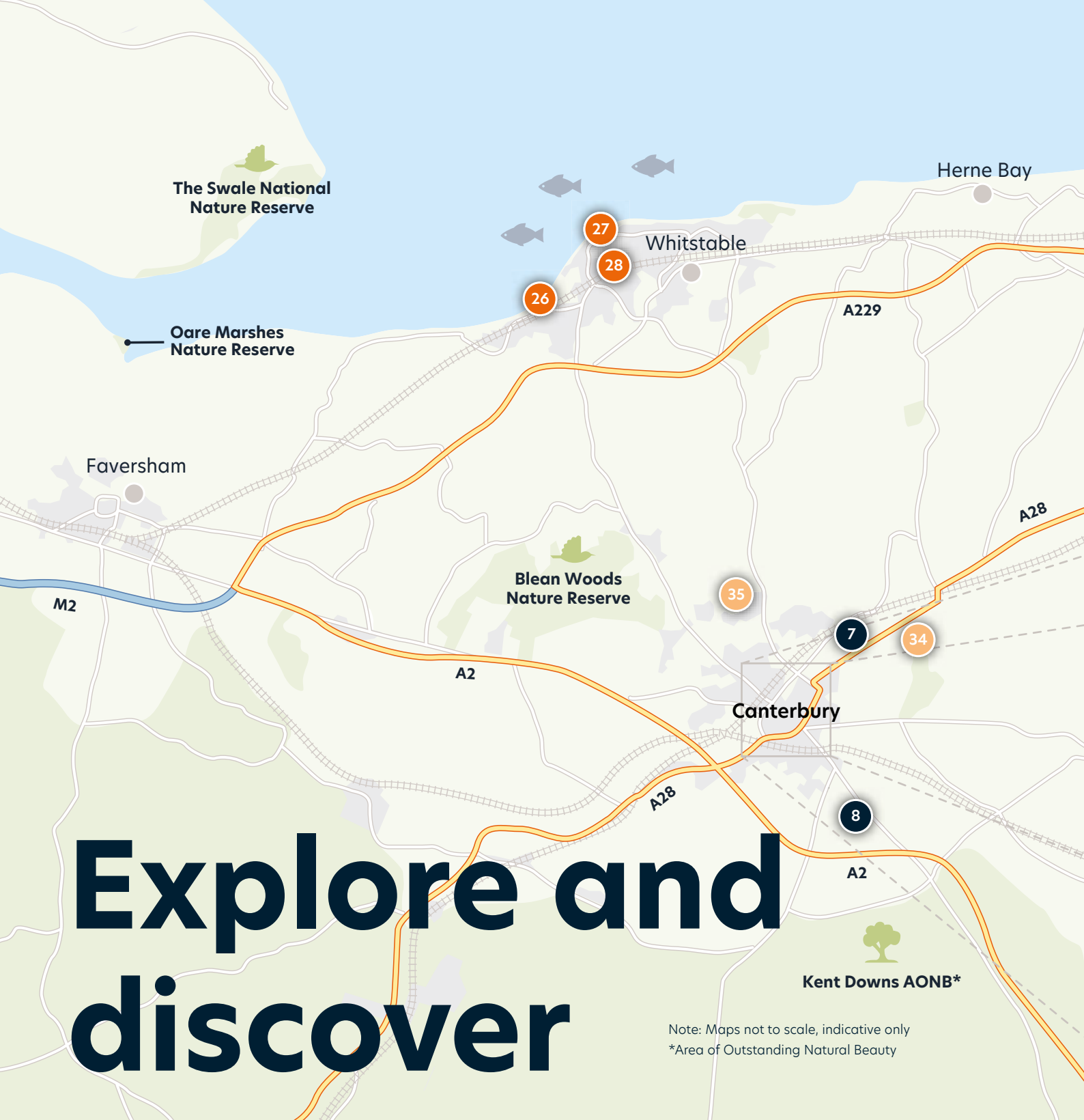
Driving mileage taken from postcode CT1 1JX. All distances sourced from google.com/maps



## By bus

Average travel times. For more information bustimes.org/localities/canterbury



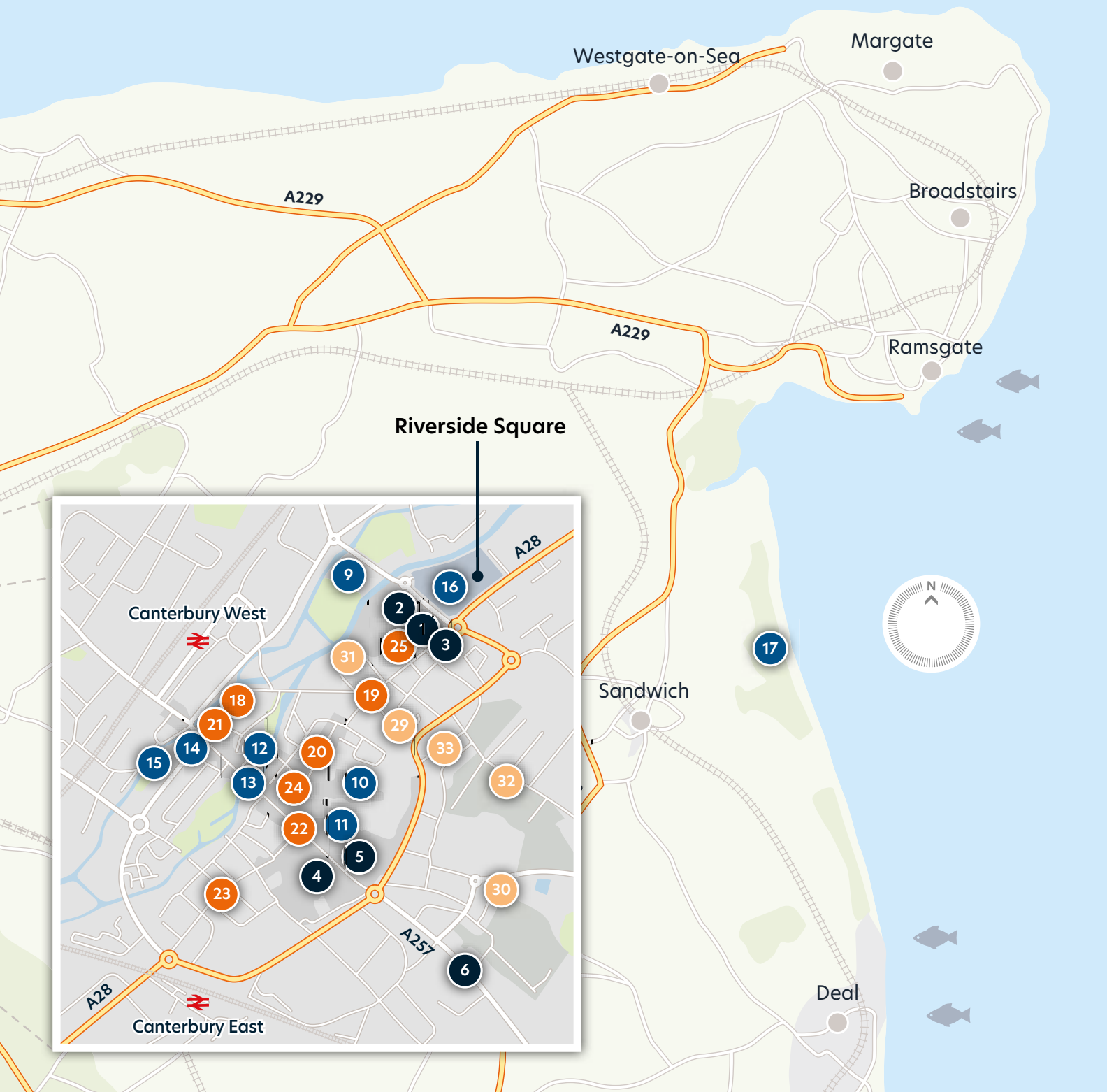


# Explore and discover

Note: Maps not to scale, indicative only  
\*Area of Outstanding Natural Beauty

## Get out and about

Canterbury is an ideal location for exploring the whole of the county of Kent, from the stunning seascapes of the north coast to the glorious rolling countryside of the Garden of England. Go for a rural ramble, take the kids to the seaside or get close to nature at one of the many wildlife reserves and country parks.



**● Amenities**

- 1. Sainsbury's Superstore
- 2. Lloyds Pharmacy
- 3. Northgate Medical Practice
- 4. Whitefriars Shopping Centre
- 5. Canterbury Post Office
- 6. Barton Veterinary Hospital & Surgery
- 7. Asda Superstore
- 8. Kent and Canterbury Hospital

**● Recreation**

- 9. Kingsmead Leisure Centre
- 10. Canterbury Cathedral
- 11. Roman Museum
- 12. Canterbury Historic River Tours
- 13. The Marlowe Theatre
- 14. Westgate Towers Museum & Viewpoint
- 15. Westgate Gardens
- 16. The Riverside Complex
- 17. Royal St George's & Prince's Golf Clubs

**● Food and drink**

- 18. Cafe du Soleil
- 19. Posillipo
- 20. Bramley's
- 21. The Pound
- 22. Côte
- 23. Pinocchio's Restaurant
- 24. Oscar & Bentleys
- 25. Starbucks
- 26. The Sportsman
- 27. The Lobster Shack
- 28. Whitstable Oyster Company

**● Education**

- 29. The King's School
- 30. Barton Court Grammar School
- 31. St. Johns C of E Primary School
- 32. Canterbury Christ Church University
- 33. St. Thomas' Catholic Primary School
- 34. Parkside Community Primary School
- 35. University of Kent

# Specification and design

The specification in our new homes has been carefully considered to provide a quality home, offering integrated appliances and floor finishes throughout at no extra cost. So your new home is ready to move into!



Image of Riverside Square show apartment interior.



Image of Riverside Square show apartment interior.



Image of Riverside Square show apartment interior.

# Bespoke specifications

## Option 1 - Reed Specification

### Kitchen

- Gloss "White" Kitchen cabinets with silver handles
- Laminate worktop/upstand in 'Dark Ash'
- Pewter gray glass splash-back
- Single built in electric oven and hob
- Cooker hood
- Integrated fridge/freezer and dishwasher

### Flooring

- "Nordic Oak" Amtico flooring to lounge, living areas, kitchen and hallways
- Neutral porcelain tiles to bathroom and where applicable, en-suites
- Neutral carpet to bedrooms

### Bathroom

- Quality white bathroom suite
- Shower over bath with glass bath/shower screen
- Contemporary chrome taps to basin and bath
- Neutral toned porcelain tiles to walls around wet area
- White towel rail

### Plots

1, 5, 8, 10, 12, 15, 17, 21, 24, 26, 28, 30, 32, 36, 39, 42, 44, 47, 51, 54, 55, 58, 60, 61, 63, 64, 68, 70, 72, 75, 78, 81, 85, 87, 89, 93, 97, 102, 104

## Option 2 - Meadow Specification

### Kitchen

- Matt "Urban pebble" kitchen cabinets with silver handles
- Laminate worktop/upstand in 'Dark Ash'
- Pewter gray glass splash-back
- Single built in electric oven and hob
- Cooker hood
- Integrated fridge/freezer and dishwasher

### Flooring

- "White Ash" Amtico flooring to lounge, living areas, kitchen and hallways
- Neutral porcelain tiles to bathroom and where applicable, en-suites
- Neutral carpet to bedrooms

### Bathroom

- Quality white bathroom suite
- Shower over bath with glass bath/shower screen
- Contemporary chrome taps to basin and bath
- Neutral toned porcelain tiles to walls around wet area
- White towel rail

### Plots

2, 4, 7, 9, 14, 16, 18, 20, 23, 25, 29, 31, 33, 35, 38, 41, 45, 46, 48, 50, 53, 57, 62, 66, 69, 74, 77, 80, 82, 83, 84, 88, 90, 92, 96, 98, 100, 103, 106, 107

## Option 3 - Willow Specification

### Kitchen

- Gloss "Platinum" kitchen cabinets with silver handles
- Laminate worktop/upstand in 'Carbon Steel'
- Pewter gray glass splash-back
- Single built in electric oven and hob
- Cooker hood
- Integrated fridge/freezer and dishwasher

### Flooring

- "Nordic Oak" Amtico flooring to lounge, living areas, kitchen and hallways
- Neutral porcelain tiles to bathroom and where applicable, en-suites
- Neutral carpet to bedrooms

### Bathroom

- Quality white bathroom suite
- Shower over bath with glass bath/shower screen
- Contemporary chrome taps to basin and bath
- Neutral toned porcelain tiles to walls around wet area
- White towel rail

### Plots

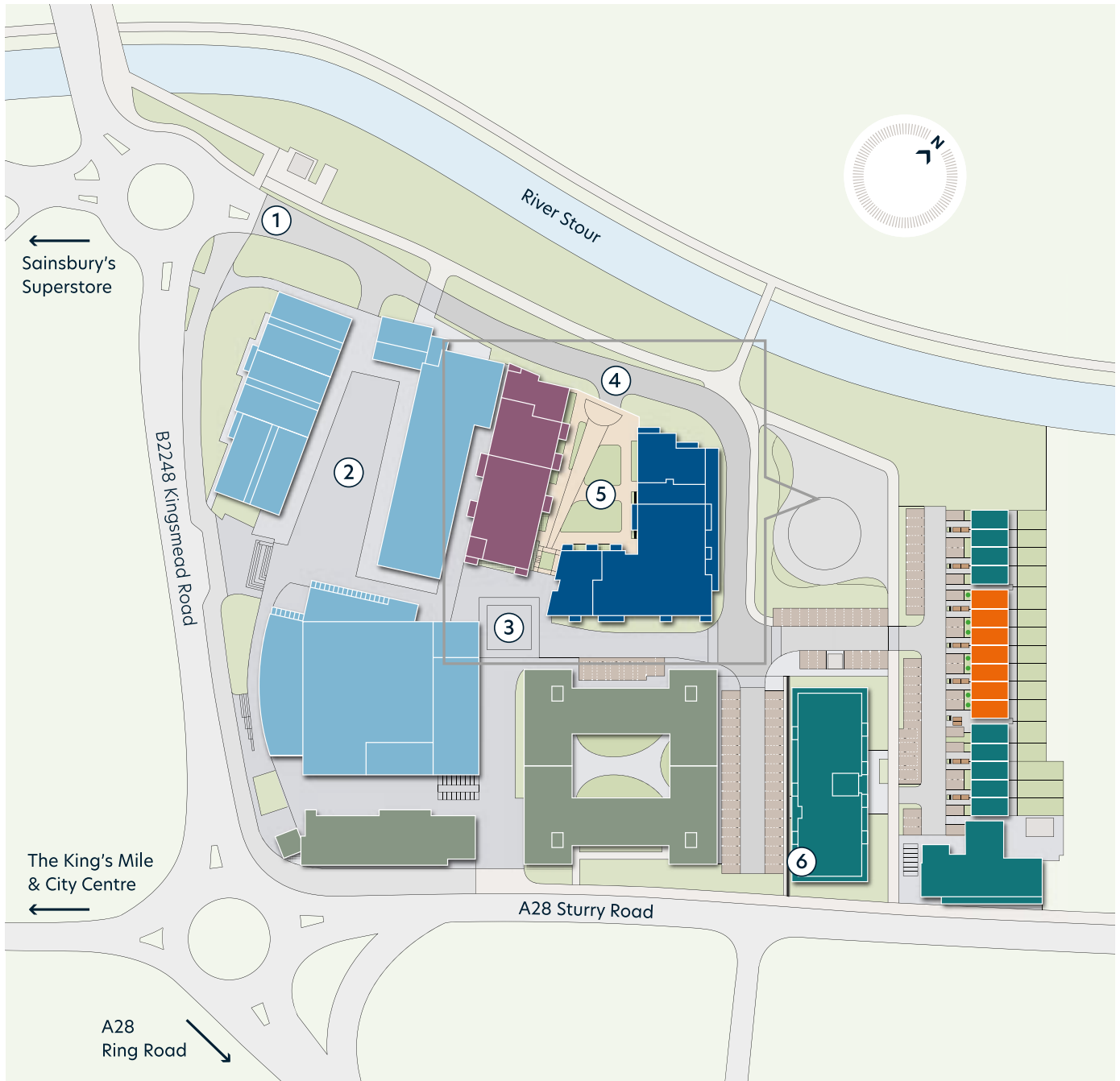
3, 6, 11, 19, 22, 27, 34, 37, 40, 43, 49, 52, 56, 59, 65, 67, 71, 73, 76, 79, 86, 91, 94, 95, 99, 101, 105

## General

- White matte painted wall finish
- Chrome ironmongery to white internal doors
- Downlighters to kitchen, diner and bathroom
- Ceiling pendants to living area, bedroom(s) and halls
- Washing machine/dryer
- Fitted wardrobe to master bedroom
- Communal TV aerial and Sky Q connections, with BT Fibre to property
- Allocated parking to all homes
- Cycle storage
- Video door entry system
- Passenger lift located within the entrance lobby
- Electric central heating system serving white radiators
- 999 year lease
- Build Zone warranty

The information in this document is indicative and is intended to act as a guide only as to the finished product. Accordingly, due to the Hyde New Homes policy of continuous improvement, the finished product may vary from the information provided. These particulars should not be relied upon as accurately describing any of the specific matters described by any order under the Consumer Protection From Unfair Trading regulations 2008. This information does not constitute a contract or warranty. The dimensions provided on plans are subject to variations and are not intended to be used for carpet sizes, appliance sizes or items of furniture. Specifications are subject to change.

# Overview of The Riverside



## General Key

- Mallard House - Shared ownership apartments
- Pipistrelle House - Shared ownership apartments

---

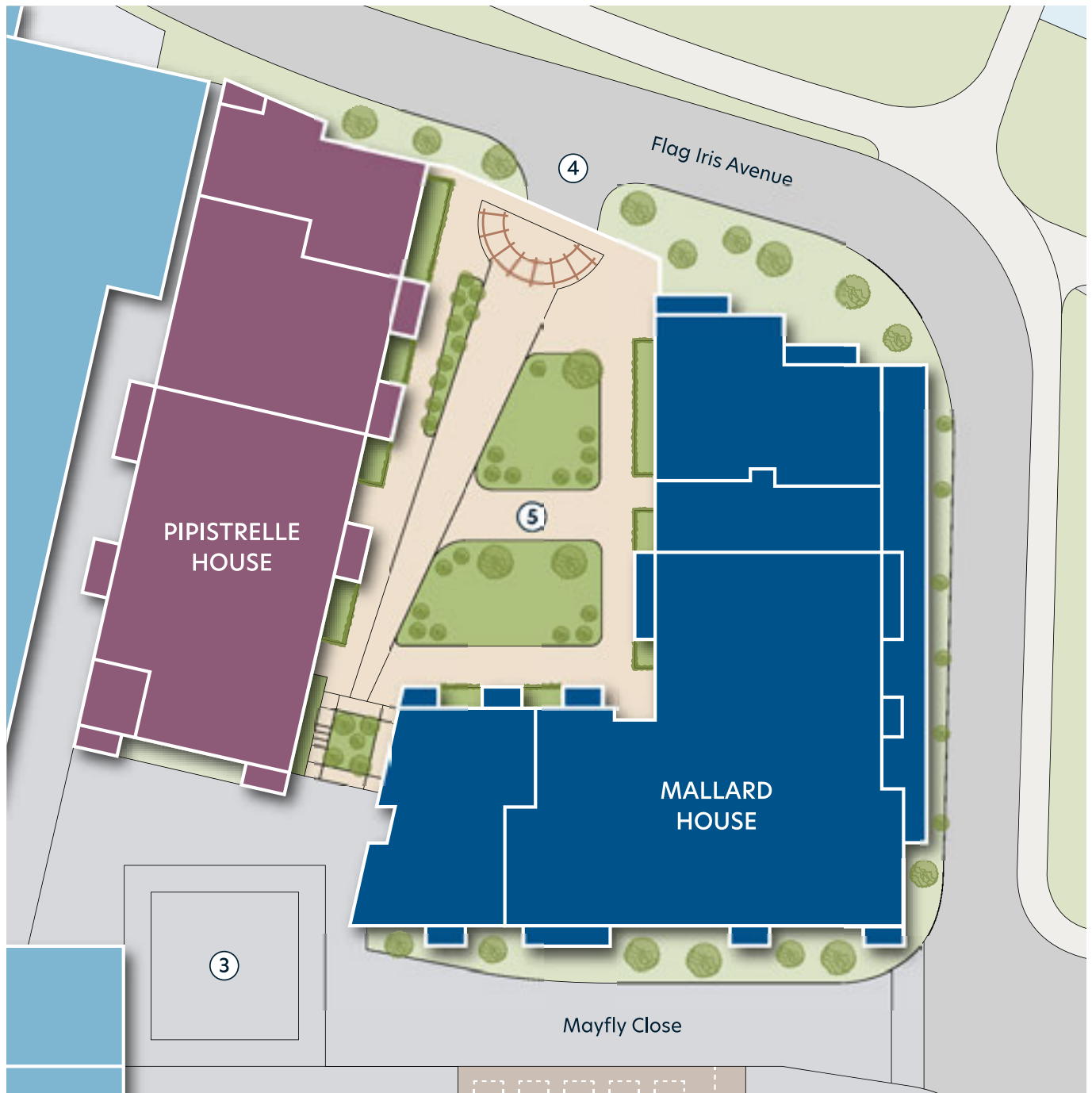
- Shared ownership houses
- Affordable rent houses & apartments
- Student accommodation
- Curzon cinema & leisure outlets

- ① Vehicular access to development
- ② The Square
- ③ The Quad
- ④ Entry and exit to Mallard and Pipistrelle House Parking
- ⑤ Private communal gardens to Mallard and Pipistrelle House
- ⑥ Marketing Suite & Show Home

# Riverside Square - The Stour Collection

The Stour Collection at Riverside Square Village offers beautifully appointed, contemporary homes designed for modern lifestyles.

All the apartments have access to valuable, private outside space in the form of terraces or balconies, parking and all enjoy access to the residents only podium garden.



# Parking and facilities plan

## Allocated parking spaces

Allocated parking is located on the lower ground floor under Mallard House and on Mayfly Close as shown.

- Mallard House parking
- Pipistrelle House parking

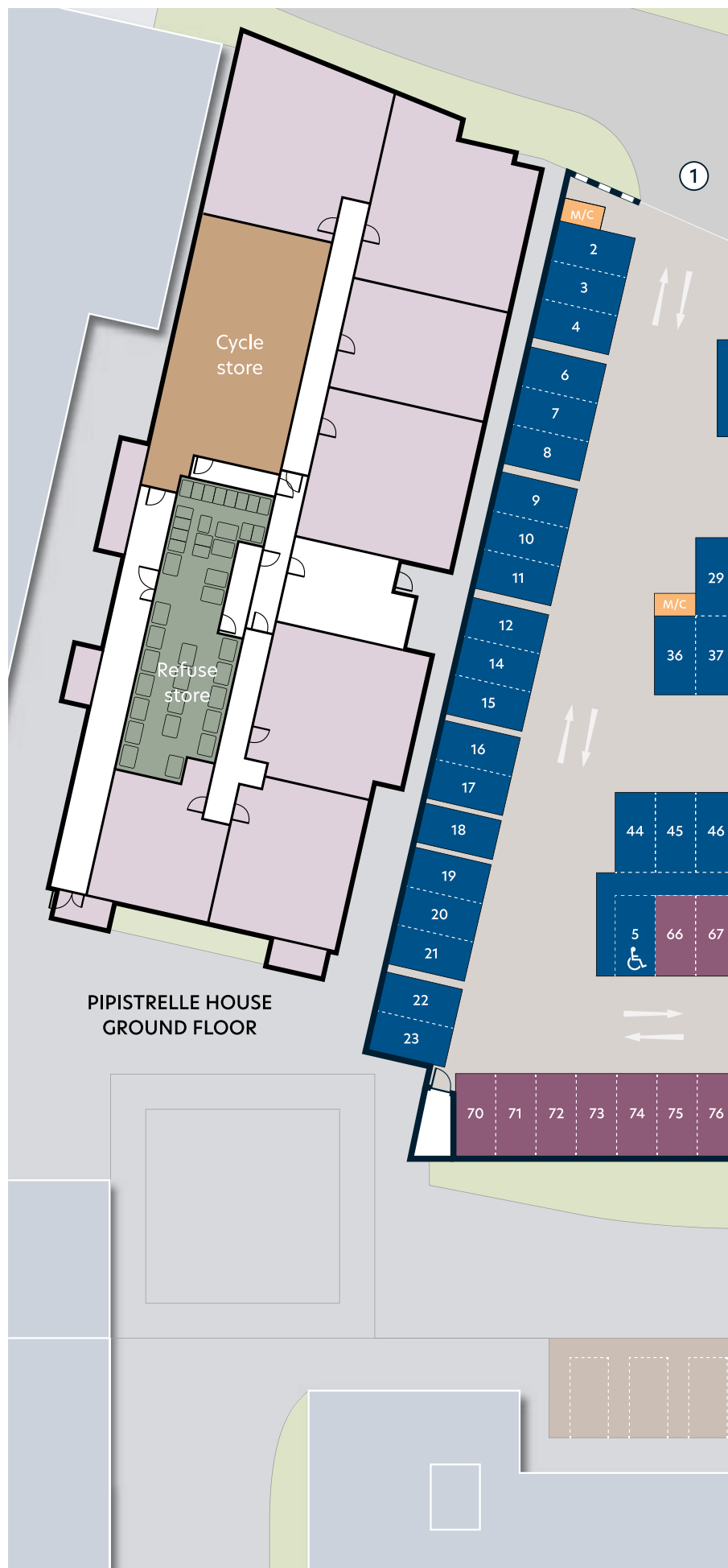
## Refuse and cycle store

The refuse and cycle stores for all apartments are located on the ground floor of Pipistrelle House.

- Cycle store
- Refuse store

## General key

- ① Entry and exit to lower ground floor parking
- ② Stairwell and lift to Mallard House floors above
- ③ EV Charging Point (Pay as you go)





# Mallard House



Image of Riverside Square show apartment interior.

# Plot 2

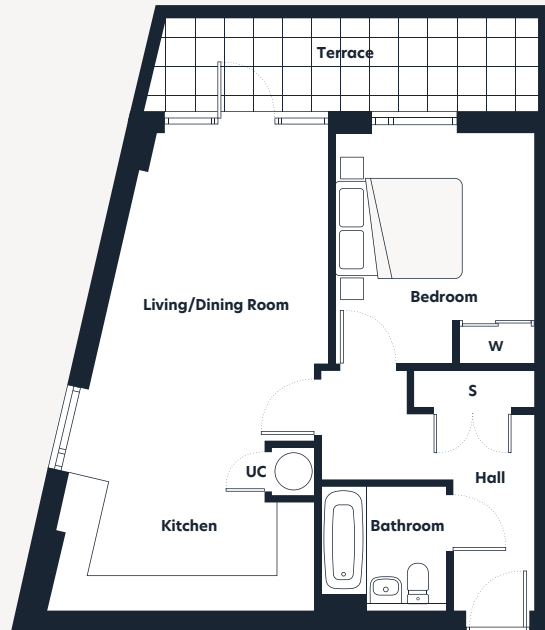
1 bedroom apartment



## Floorplan key

- S** Storage space
- W** Wardrobe
- UC** Utility cupboard

NB: Washing machine/dryer in kitchen

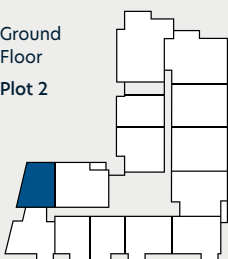


Dimensions	m	ft
Kitchen	4.26 x 1.77	14'0" x 5'10"
Living/Dining Room	3.65 x 5.82	12'0" x 19'1"
Bedroom	3.21 x 3.63	10'6" x 11'11"
Bathroom	2.00 x 1.98	6'7" x 6'6"
<b>Gross Internal Area</b>	<b>54m<sup>2</sup></b>	<b>581ft<sup>2</sup></b>
Terrace	6.07 x 1.50	19'11" x 4'11"

## Locator key



Ground Floor  
Plot 2



The floorplans are intended to give a general indication of the proposed floorplan layout. They are not drawn to scale and are not intended to form part of any offer, warranty or representation. Measurements are approximate and are given as a guide and as such must not be relied on as a statement or representation of fact. Total areas shown are maximum and may vary for each unit within a type. Do not use these measurements for carpets, appliance spaces or items of furniture. Kitchen, bathroom and utility layouts and door swings may differ to build and specific plot sizes and layouts may vary within the same unit type. Hyde reserves the right to make changes to these plans prior to exchange of contracts. For further information regarding specific individual plots, please ask your Sales Consultant.

# Plot 4

1 bedroom apartment

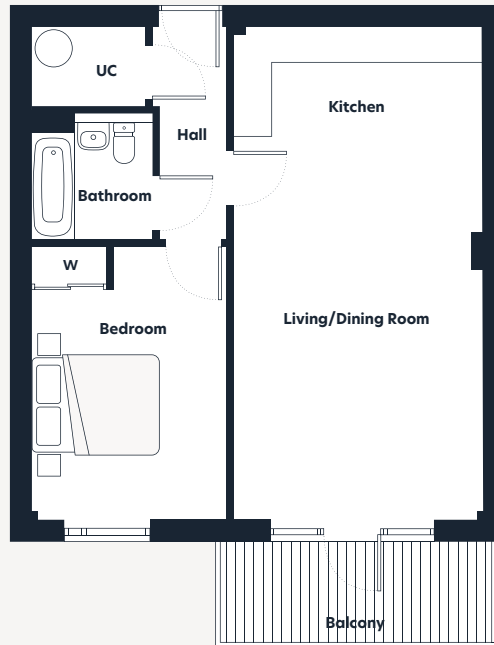


## Floorplan key

**W** Wardrobe

**UC** Utility cupboard

NB: Washing machine/dryer in kitchen

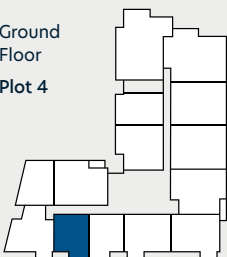


Dimensions	m	ft
Kitchen	3.99 x 1.80	13'1" x 5'11"
Living/Dining Room	3.99 x 6.07	13'1" x 19'11"
Bedroom	3.13 x 4.30	10'3" x 14'1"
Bathroom	2.00 x 1.93	6'7" x 6'4"
<b>Gross Internal Area</b>	<b>57m<sup>2</sup></b>	<b>618ft<sup>2</sup></b>
Balcony	4.30 x 1.60	14'1" x 5'3"

## Locator key



Ground  
Floor  
Plot 4



The floorplans are intended to give a general indication of the proposed floorplan layout. They are not drawn to scale and are not intended to form part of any offer, warranty or representation. Measurements are approximate and are given as a guide and as such must not be relied on as a statement or representation of fact. Total areas shown are maximum and may vary for each unit within a type. Do not use these measurements for carpets, appliance spaces or items of furniture. Kitchen, bathroom and utility layouts and door swings may differ to build and specific plot sizes and layouts may vary within the same unit type. Hyde reserves the right to make changes to these plans prior to exchange of contracts. For further information regarding specific individual plots, please ask your Sales Consultant.

# Plot 5

1 bedroom apartment

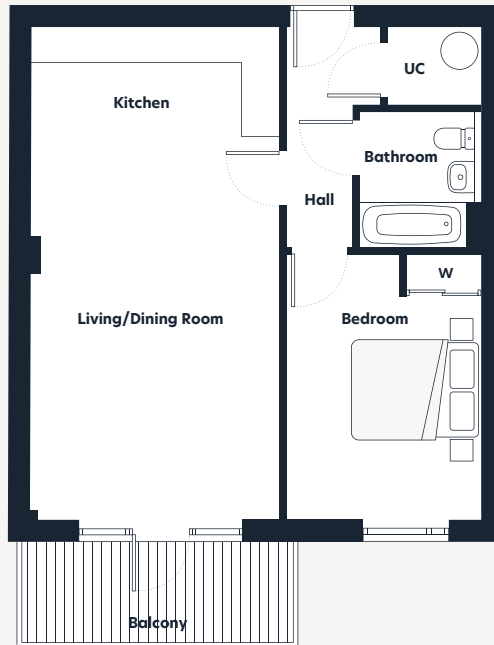


## Floorplan key

**W** Wardrobe

**UC** Utility cupboard

NB: Washing machine/dryer in kitchen

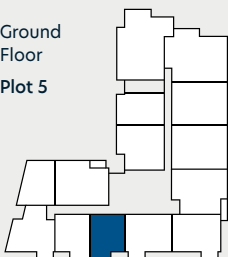


Dimensions	m	ft
Kitchen	3.97 x 1.80	13'0" x 5'11"
Living/Dining Room	3.97 x 6.07	13'0" x 19'11"
Bedroom	3.15 x 4.20	10'4" x 13'9"
Bathroom	2.15 x 1.99	7'1" x 6'6"
<b>Gross Internal Area</b>	<b>57m<sup>2</sup></b>	<b>618ft<sup>2</sup></b>
Balcony	4.30 x 1.60	14'1" x 5'3"

## Locator key



Ground Floor  
Plot 5



The floorplans are intended to give a general indication of the proposed floorplan layout. They are not drawn to scale and are not intended to form part of any offer, warranty or representation. Measurements are approximate and are given as a guide and as such must not be relied on as a statement or representation of fact. Total areas shown are maximum and may vary for each unit within a type. Do not use these measurements for carpets, appliance spaces or items of furniture. Kitchen, bathroom and utility layouts and door swings may differ to build and specific plot sizes and layouts may vary within the same unit type. Hyde reserves the right to make changes to these plans prior to exchange of contracts. For further information regarding specific individual plots, please ask your Sales Consultant.

# Plot 14

1 bedroom apartment

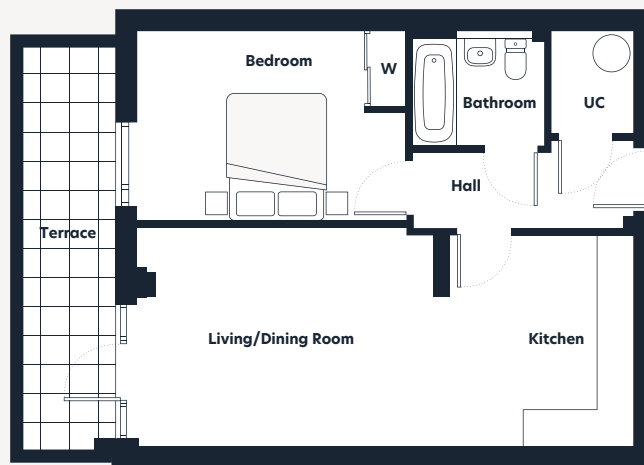


## Floorplan key

**W** Wardrobe

**UC** Utility cupboard

NB: Washing machine/dryer in kitchen

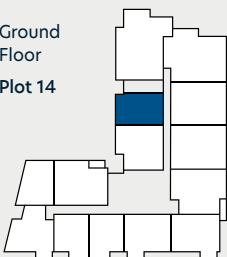


Dimensions	m	ft
Kitchen	3.41 x 1.78	11'2" x 5'10"
Living/Dining Room	3.52 x 6.13	11'7" x 20'1"
Bedroom	3.04 x 4.27	10'0" x 14'0"
Bathroom	2.08 x 1.84	6'10" x 6'0"
<b>Gross Internal Area</b>	<b>53m<sup>2</sup></b>	<b>575ft<sup>2</sup></b>
Terrace	6.42 x 1.50	22'1" x 4'11"

## Locator key



Ground  
Floor  
Plot 14



The floorplans are intended to give a general indication of the proposed floorplan layout. They are not drawn to scale and are not intended to form part of any offer, warranty or representation. Measurements are approximate and are given as a guide and as such must not be relied on as a statement or representation of fact. Total areas shown are maximum and may vary for each unit within a type. Do not use these measurements for carpets, appliance spaces or items of furniture. Kitchen, bathroom and utility layouts and door swings may differ to build and specific plot sizes and layouts may vary within the same unit type. Hyde reserves the right to make changes to these plans prior to exchange of contracts. For further information regarding specific individual plots, please ask your Sales Consultant.

# Plots 17, 32 & 47

1 bedroom apartment

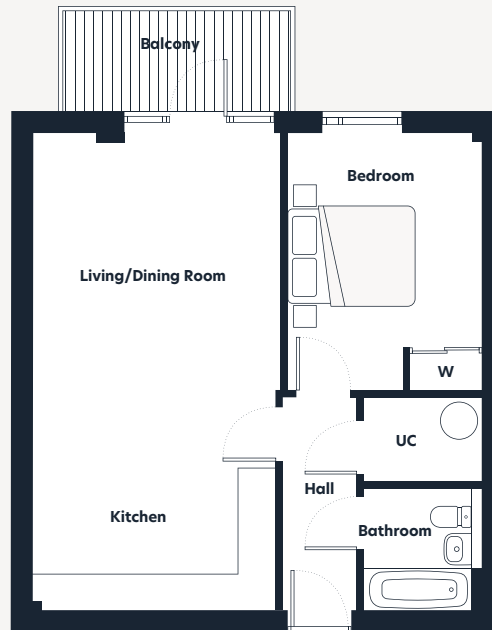


## Floorplan key

**W** Wardrobe

**UC** Utility cupboard

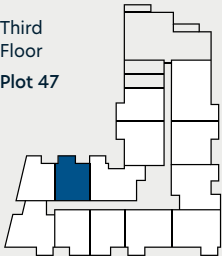
NB: Washing machine/dryer in kitchen



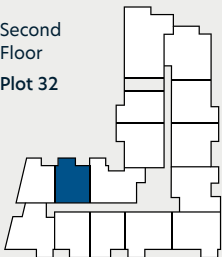
## Locator key



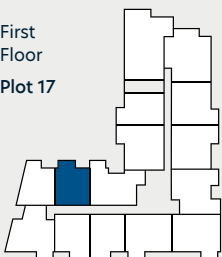
Third Floor  
Plot 47



Second Floor  
Plot 32



First Floor  
Plot 17



Dimensions	m	ft
Kitchen	3.88 x 2.30	12'9" x 7'7"
Living/Dining Room	3.98 x 5.29	13'1" x 17'4"
Bedroom	3.13 x 4.04	10'3" x 13'3"
Bathroom	1.97 x 1.92	6'6" x 6'4"
<b>Gross Internal Area</b>	<b>55m<sup>2</sup></b>	<b>597ft<sup>2</sup></b>
Balcony	3.65 x 1.60	12'0" x 5'3"

The floorplans are intended to give a general indication of the proposed floorplan layout. They are not drawn to scale and are not intended to form part of any offer, warranty or representation. Measurements are approximate and are given as a guide and as such must not be relied on as a statement or representation of fact. Total areas shown are maximum and may vary for each unit within a type. Do not use these measurements for carpets, appliance spaces or items of furniture. Kitchen, bathroom and utility layouts and door swings may differ to build and specific plot sizes and layouts may vary within the same unit type. Hyde reserves the right to make changes to these plans prior to exchange of contracts. For further information regarding specific individual plots, please ask your Sales Consultant.

# Plots 18, 33 & 48

1 bedroom apartment

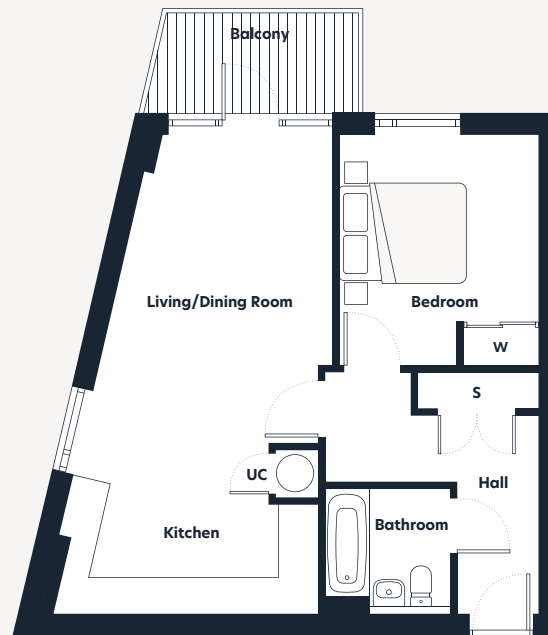


## Floorplan key

W Wardrobe

UC Utility cupboard

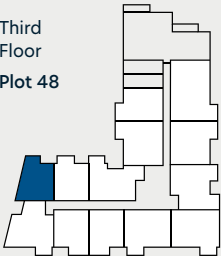
NB: Washing machine/dryer in kitchen



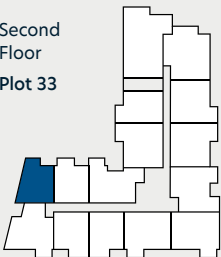
## Locator key



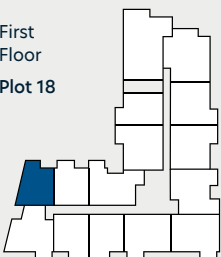
Third Floor  
Plot 48



Second Floor  
Plot 33



First Floor  
Plot 18



Dimensions	m	ft
Kitchen	4.12 x 1.77	13'6" x 5'10"
Living/Dining Room	3.65 x 5.82	12'0" x 19'1"
Bedroom	3.21 x 3.63	10'6" x 11'11"
Bathroom	1.98 x 1.98	6'6" x 6'6"
<b>Gross Internal Area</b>	<b>54m<sup>2</sup></b>	<b>583ft<sup>2</sup></b>
Balcony	3.26 x 1.60	10'8" x 5'3"

The floorplans are intended to give a general indication of the proposed floorplan layout. They are not drawn to scale and are not intended to form part of any offer, warranty or representation. Measurements are approximate and are given as a guide and as such must not be relied on as a statement or representation of fact. Total areas shown are maximum and may vary for each unit within a type. Do not use these measurements for carpets, appliance spaces or items of furniture. Kitchen, bathroom and utility layouts and door swings may differ to build and specific plot sizes and layouts may vary within the same unit type. Hyde reserves the right to make changes to these plans prior to exchange of contracts. For further information regarding specific individual plots, please ask your Sales Consultant.

# Plots 20, 35 & 50

1 bedroom apartment



## Floorplan key

**W** Wardrobe

**UC** Utility cupboard

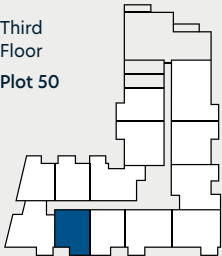
NB: Washing machine/dryer in kitchen



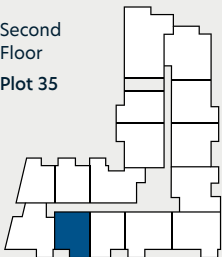
## Locator key



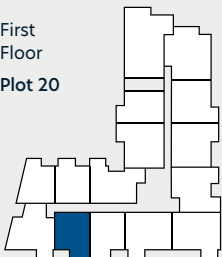
Third Floor  
Plot 50



Second Floor  
Plot 35



First Floor  
Plot 20



Dimensions	m	ft
Kitchen	3.99 x 1.77	13'1" x 5'10"
Living/Dining Room	3.99 x 6.08	13'1" x 19'11"
Bedroom	3.13 x 4.30	10'3" x 14'1"
Bathroom	2.00 x 1.93	6'7" x 6'4"
<b>Gross Internal Area</b>	<b>57m<sup>2</sup></b>	<b>618ft<sup>2</sup></b>
Balcony	4.31 x 1.60	10'2" x 5'3"

The floorplans are intended to give a general indication of the proposed floorplan layout. They are not drawn to scale and are not intended to form part of any offer, warranty or representation. Measurements are approximate and are given as a guide and as such must not be relied on as a statement or representation of fact. Total areas shown are maximum and may vary for each unit within a type. Do not use these measurements for carpets, appliance spaces or items of furniture. Kitchen, bathroom and utility layouts and door swings may differ to build and specific plot sizes and layouts may vary within the same unit type. Hyde reserves the right to make changes to these plans prior to exchange of contracts. For further information regarding specific individual plots, please ask your Sales Consultant.

# Plots 21, 36 & 51

1 bedroom apartment

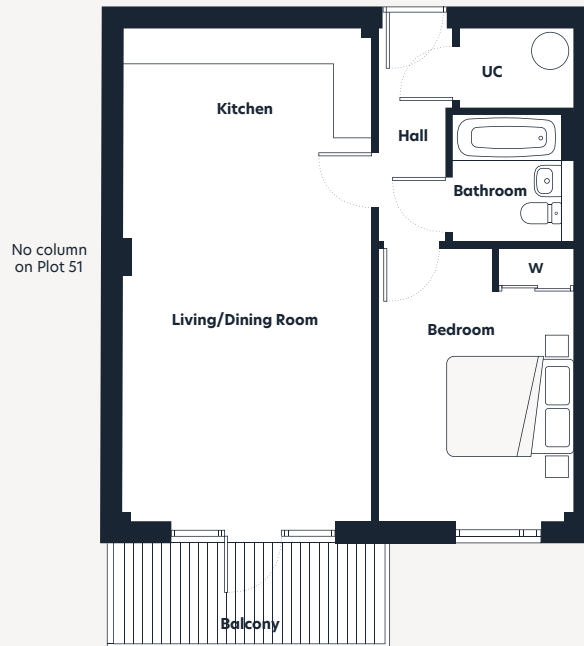


## Floorplan key

**W** Wardrobe

**UC** Utility cupboard

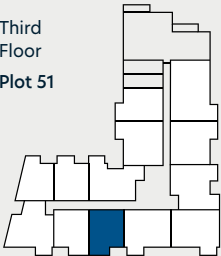
NB: Washing machine/dryer in kitchen



## Locator key



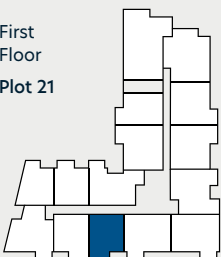
Third  
Floor  
Plot 51



Second  
Floor  
Plot 36



First  
Floor  
Plot 21



Dimensions	m	ft
Kitchen	3.98 x 1.77	13'0" x 5'10"
Living/Dining Room	3.98 x 6.08	13'0" x 19'11"
Bedroom	3.13 x 4.30	10'3" x 14'1"
Bathroom	2.00 x 1.93	6'7" x 6'4"
<b>Gross Internal Area</b>	<b>57m<sup>2</sup></b>	<b>618ft<sup>2</sup></b>
Balcony	4.31 x 1.60	14'2" x 5'3"

The floorplans are intended to give a general indication of the proposed floorplan layout. They are not drawn to scale and are not intended to form part of any offer, warranty or representation. Measurements are approximate and are given as a guide and as such must not be relied on as a statement or representation of fact. Total areas shown are maximum and may vary for each unit within a type. Do not use these measurements for carpets, appliance spaces or items of furniture. Kitchen, bathroom and utility layouts and door swings may differ to build and specific plot sizes and layouts may vary within the same unit type. Hyde reserves the right to make changes to these plans prior to exchange of contracts. For further information regarding specific individual plots, please ask your Sales Consultant.

# Plots 29, 44 & 57

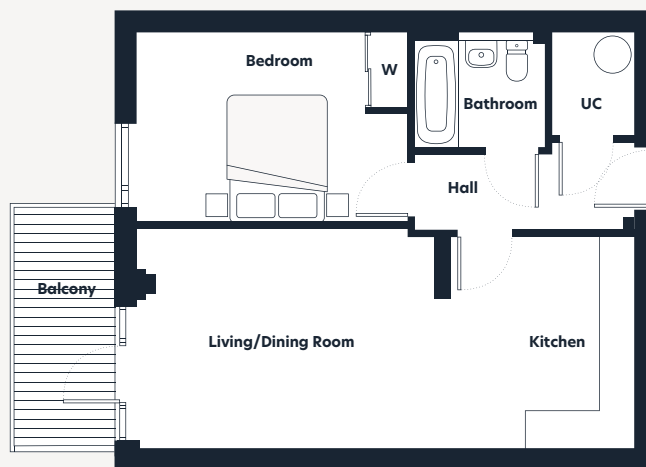
1 bedroom apartment



## Floorplan key

**W** Wardrobe  
**UC** Utility cupboard

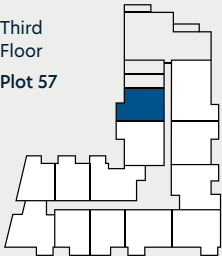
NB: Washing machine/dryer in kitchen



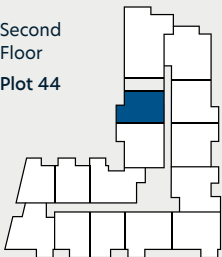
## Locator key



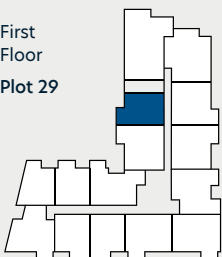
Third Floor  
Plot 57



Second Floor  
Plot 44



First Floor  
Plot 29



Dimensions	m	ft
Kitchen	3.41 x 1.75	11'2" x 5'9"
Living/Dining Room	3.52 x 6.17	11'6" x 20'3"
Bedroom	3.04 x 4.27	9'12" x 14'0"
Bathroom	2.09 x 1.84	6'10" x 6'0"
<b>Gross Internal Area</b>	<b>53m<sup>2</sup></b>	<b>575ft<sup>2</sup></b>
Balcony	3.80 x 1.60	12'6" x 5'3"

The floorplans are intended to give a general indication of the proposed floorplan layout. They are not drawn to scale and are not intended to form part of any offer, warranty or representation. Measurements are approximate and are given as a guide and as such must not be relied on as a statement or representation of fact. Total areas shown are maximum and may vary for each unit within a type. Do not use these measurements for carpets, appliance spaces or items of furniture. Kitchen, bathroom and utility layouts and door swings may differ to build and specific plot sizes and layouts may vary within the same unit type. Hyde reserves the right to make changes to these plans prior to exchange of contracts. For further information regarding specific individual plots, please ask your Sales Consultant.

# Plot 1

## 2 bedroom apartment



### Floorplan key

**W** Wardrobe

**UC** Utility cupboard

NB: Washing machine/dryer in kitchen

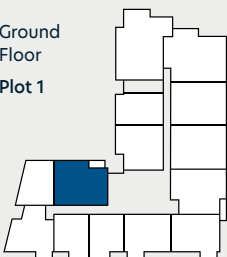


Dimensions	m	ft
Kitchen	4.78 x 2.10	15'8" x 6'11"
Living/Dining Room	3.98 x 5.49	13'1" x 18'0"
Bedroom 1	3.62 x 3.98	11'11" x 13'1"
En Suite	1.70 x 2.12	5'7" x 6'11"
Bedroom 2	3.31 x 3.98	10'10" x 13'1"
Bathroom	2.28 x 2.13	7'6" x 7'0"
<b>Gross Internal Area</b>	<b>85m<sup>2</sup></b>	<b>918ft<sup>2</sup></b>
Terrace	7.00 x 1.50	23'0" x 4'11"

### Locator key



Ground Floor  
Plot 1



The floorplans are intended to give a general indication of the proposed floorplan layout. They are not drawn to scale and are not intended to form part of any offer, warranty or representation. Measurements are approximate and are given as a guide and as such must not be relied on as a statement or representation of fact. Total areas shown are maximum and may vary for each unit within a type. Do not use these measurements for carpets, appliance spaces or items of furniture. Kitchen, bathroom and utility layouts and door swings may differ to build and specific plot sizes and layouts may vary within the same unit type. Hyde reserves the right to make changes to these plans prior to exchange of contracts. For further information regarding specific individual plots, please ask your Sales Consultant.

# Plots 3, 19, 34 & 49

2 bedroom apartment



## Floorplan key

- W** Wardrobe
- UC** Utility cupboard
- W/D** Washing machine/dryer

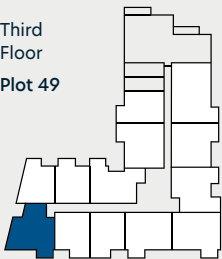


Window included on Plot 49 only

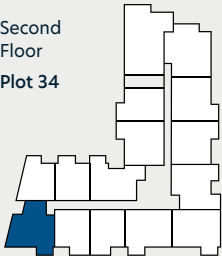
## Locator key



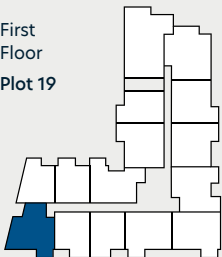
Third Floor  
Plot 49



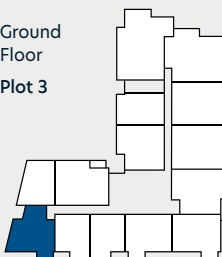
Second Floor  
Plot 34



First Floor  
Plot 19



Ground Floor  
Plot 3



Dimensions	m	ft
Kitchen	3.43 x 2.20	11'3" x 7'3"
Living/Dining Room	3.43 x 4.42	11'3" x 14'6"
Bedroom 1	3.68 x 4.49	12'1" x 14'9"
En Suite	2.37 x 1.65	7'9" x 5'5"
Bedroom 2	3.22 x 4.18	10'7" x 13'9"
Bathroom	2.50 x 1.86	8'2" x 6'1"
<b>Gross Internal Area</b>	<b>79m<sup>2</sup></b>	<b>849ft<sup>2</sup></b>
Balcony	3.55 x 1.60	11'8" x 5'3"

The floorplans are intended to give a general indication of the proposed floorplan layout. They are not drawn to scale and are not intended to form part of any offer, warranty or representation. Measurements are approximate and are given as a guide and as such must not be relied on as a statement or representation of fact. Total areas shown are maximum and may vary for each unit within a type. Do not use these measurements for carpets, appliance spaces or items of furniture. Kitchen, bathroom and utility layouts and door swings may differ to build and specific plot sizes and layouts may vary within the same unit type. Hyde reserves the right to make changes to these plans prior to exchange of contracts. For further information regarding specific individual plots, please ask your Sales Consultant.

# Plots 6, 22, 37, 52 & 61

2 bedroom apartment



## Floorplan key

**W** Wardrobe

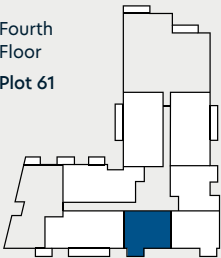
**UC** Utility cupboard

NB: Washing machine/dryer in kitchen

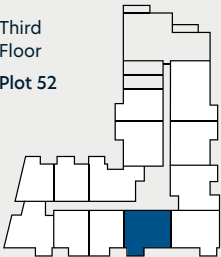
## Locator key



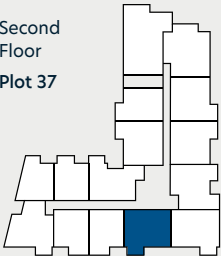
Fourth Floor  
Plot 61



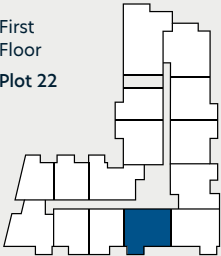
Third Floor  
Plot 52



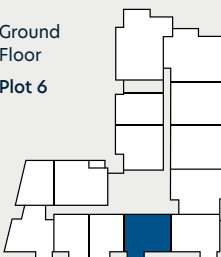
Second Floor  
Plot 37



First Floor  
Plot 22



Ground Floor  
Plot 6



## Dimensions

	<b>m</b>	<b>ft</b>
Kitchen	4.60 x 2.21	15'1" x 7'3"
Living/Dining Room	4.60 x 5.64	15'1" x 18'6"
Bedroom 1	3.00 x 4.30	9'10" x 14'1"
En Suite	1.58 x 2.05	5'2" x 6'9"
Bedroom 2	2.80 x 4.30	9'2" x 14'1"
Bathroom	2.00 x 2.13	6'7" x 7'0"
<b>Gross Internal Area</b>	<b>77m<sup>2</sup></b>	<b>832ft<sup>2</sup></b>
Balcony	3.55 x 1.60	11'8" x 5'3"

The floorplans are intended to give a general indication of the proposed floorplan layout. They are not drawn to scale and are not intended to form part of any offer, warranty or representation. Measurements are approximate and are given as a guide and as such must not be relied on as a statement or representation of fact. Total areas shown are maximum and may vary for each unit within a type. Do not use these measurements for carpets, appliance spaces or items of furniture. Kitchen, bathroom and utility layouts and door swings may differ to build and specific plot sizes and layouts may vary within the same unit type. Hyde reserves the right to make changes to these plans prior to exchange of contracts. For further information regarding specific individual plots, please ask your Sales Consultant.

# Plots 7, 23, 38, 53 & 62

2 bedroom apartment



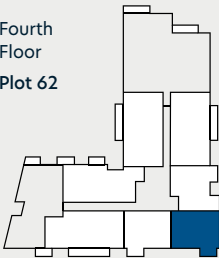
## Floorplan key

- W** Wardrobe
- UC** Utility cupboard
- W/D** Washing machine/dryer

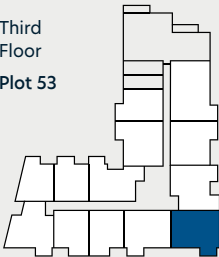
## Locator key



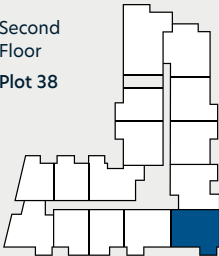
Fourth Floor  
Plot 62



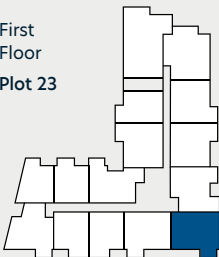
Third Floor  
Plot 53



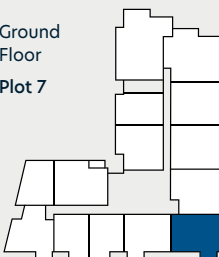
Second Floor  
Plot 38



First Floor  
Plot 23



Ground Floor  
Plot 7



Dimensions	m	ft
Kitchen	3.78 x 1.78	12'5" x 5'10"
Living/Dining Room	4.11 x 6.07	13'6" x 19'11"
Bedroom 1	2.98 x 4.30	9'9" x 14'1"
En Suite	1.62 x 2.15	5'4" x 7'1"
Bedroom 2	2.69 x 4.30	8'10" x 14'1"
Bathroom	1.96 x 2.13	6'5" x 7'0"
<b>Gross Internal Area</b>	<b>80m<sup>2</sup></b>	<b>857ft<sup>2</sup></b>
Balcony	3.55 x 1.60	11'8" x 3'3"

The floorplans are intended to give a general indication of the proposed floorplan layout. They are not drawn to scale and are not intended to form part of any offer, warranty or representation. Measurements are approximate and are given as a guide and as such must not be relied on as a statement or representation of fact. Total areas shown are maximum and may vary for each unit within a type. Do not use these measurements for carpets, appliance spaces or items of furniture. Kitchen, bathroom and utility layouts and door swings may differ to build and specific plot sizes and layouts may vary within the same unit type. Hyde reserves the right to make changes to these plans prior to exchange of contracts. For further information regarding specific individual plots, please ask your Sales Consultant.

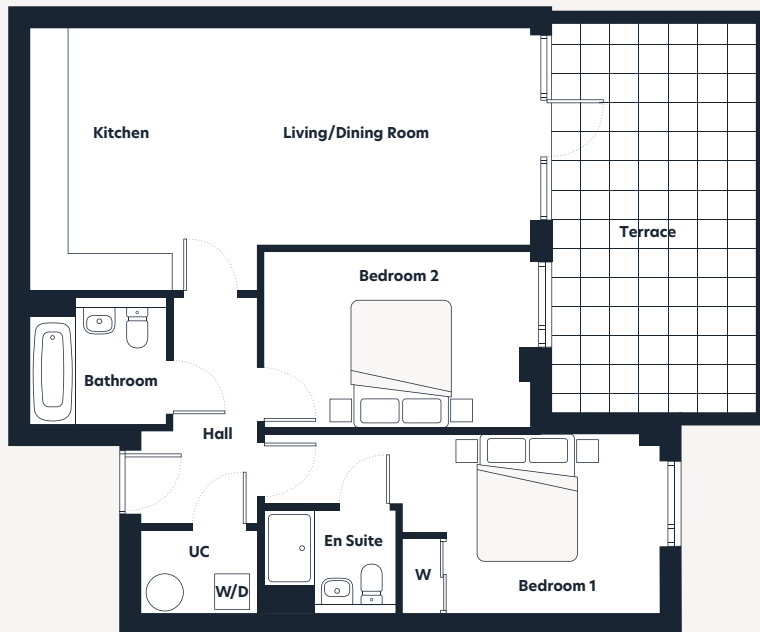
# Plot 8

2 bedroom apartment



## Floorplan key

W Wardrobe  
 UC Utility cupboard  
 W/D Washing machine/dryer

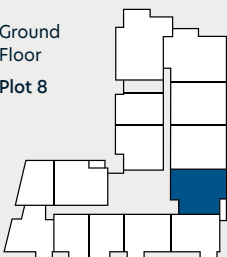


Dimensions	m	ft
Kitchen	4.19 x 2.25	13'9" x 7'5"
Living/Dining Room	3.48 x 5.66	11'5" x 18'7"
Bedroom 1	2.85 x 4.04	9'4" x 13'3"
En Suite	2.10 x 1.65	6'11" x 5'5"
Bedroom 2	2.80 x 4.22	9'2" x 13'10"
Bathroom	2.00 x 2.15	6'7" x 7'1"
<b>Gross Internal Area</b>	<b>75m<sup>2</sup></b>	<b>812ft<sup>2</sup></b>
Terrace	6.14 x 3.25	20'2" x 10'8"

## Locator key



Ground Floor  
 Plot 8



The floorplans are intended to give a general indication of the proposed floorplan layout. They are not drawn to scale and are not intended to form part of any offer, warranty or representation. Measurements are approximate and are given as a guide and as such must not be relied on as a statement or representation of fact. Total areas shown are maximum and may vary for each unit within a type. Do not use these measurements for carpets, appliance spaces or items of furniture. Kitchen, bathroom and utility layouts and door swings may differ to build and specific plot sizes and layouts may vary within the same unit type. Hyde reserves the right to make changes to these plans prior to exchange of contracts. For further information regarding specific individual plots, please ask your Sales Consultant.

# Plot 9

2 bedroom apartment

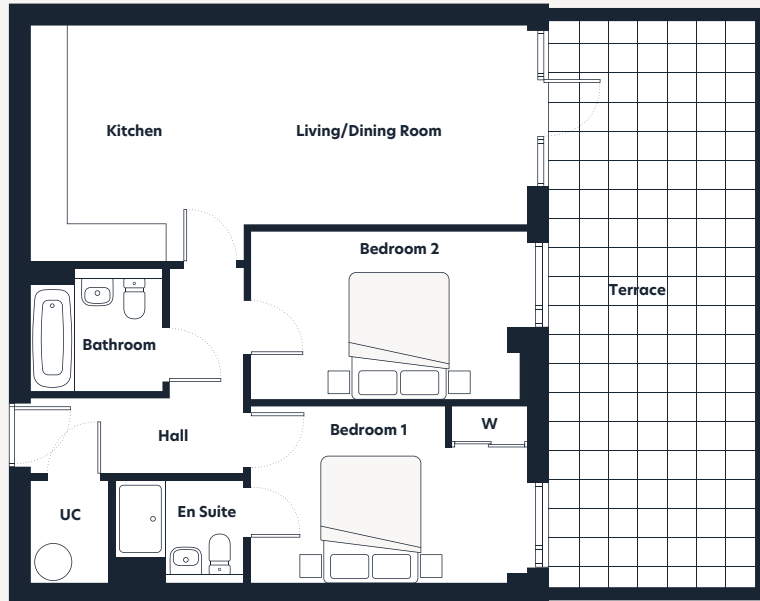


## Floorplan key

**W** Wardrobe

**UC** Utility cupboard

NB: Washing machine/dryer in kitchen

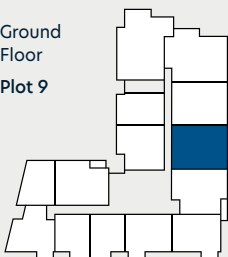


Dimensions	m	ft
Kitchen	3.80 x 2.20	12'6" x 7'3"
Living/Dining Room	3.21 x 5.71	10'6" x 18'9"
Bedroom 1	2.84 x 4.37	9'4" x 14'4"
En Suite	1.64 x 2.05	5'5" x 6'9"
Bedroom 2	2.67 x 4.37	8'9" x 14'4"
Bathroom	1.95 x 2.13	6'5" x 7'0"
<b>Gross Internal Area</b>	<b>72m<sup>2</sup></b>	<b>771ft<sup>2</sup></b>
Terrace	8.96 x 3.25	29'5" x 10'8"

## Locator key



Ground Floor  
Plot 9



The floorplans are intended to give a general indication of the proposed floorplan layout. They are not drawn to scale and are not intended to form part of any offer, warranty or representation. Measurements are approximate and are given as a guide and as such must not be relied on as a statement or representation of fact. Total areas shown are maximum and may vary for each unit within a type. Do not use these measurements for carpets, appliance spaces or items of furniture. Kitchen, bathroom and utility layouts and door swings may differ to build and specific plot sizes and layouts may vary within the same unit type. Hyde reserves the right to make changes to these plans prior to exchange of contracts. For further information regarding specific individual plots, please ask your Sales Consultant.

# Plot 10

2 bedroom apartment

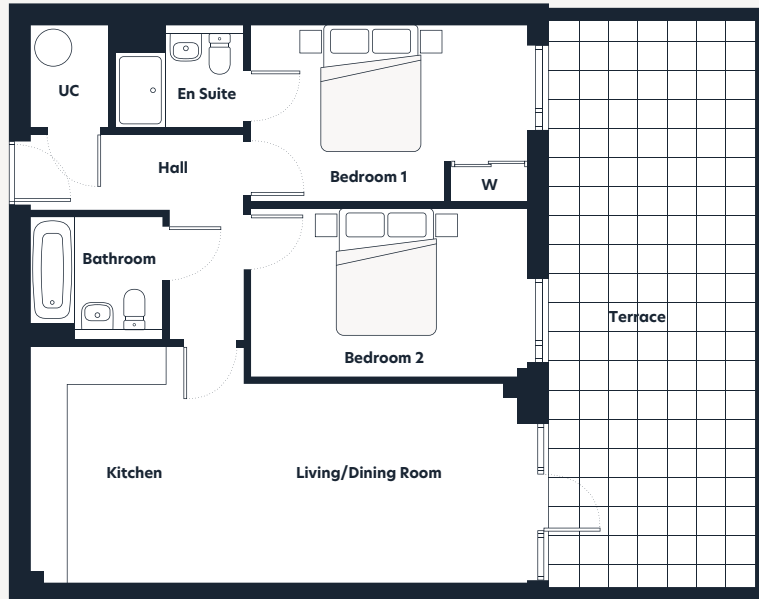


## Floorplan key

**W** Wardrobe

**UC** Utility cupboard

NB: Washing machine/dryer in kitchen

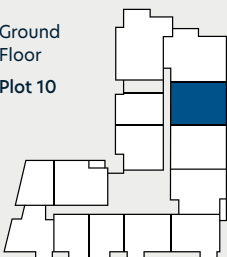


Dimensions	m	ft
Kitchen	3.78 x 2.20	12'5" x 7'3"
Living/Dining Room	3.21 x 5.71	10'6" x 18'9"
Bedroom 1	2.83 x 4.37	9'3" x 14'4"
En Suite	1.63 x 2.06	5'4" x 6'9"
Bedroom 2	2.68 x 4.37	8'10" x 14'4"
Bathroom	1.96 x 2.13	6'5" x 7'0"
<b>Gross Internal Area</b>	<b>72m<sup>2</sup></b>	<b>770ft<sup>2</sup></b>
Terrace	9.02 x 3.25	29'7" x 10'8"

## Locator key



Ground  
Floor  
Plot 10



The floorplans are intended to give a general indication of the proposed floorplan layout. They are not drawn to scale and are not intended to form part of any offer, warranty or representation. Measurements are approximate and are given as a guide and as such must not be relied on as a statement or representation of fact. Total areas shown are maximum and may vary for each unit within a type. Do not use these measurements for carpets, appliance spaces or items of furniture. Kitchen, bathroom and utility layouts and door swings may differ to build and specific plot sizes and layouts may vary within the same unit type. Hyde reserves the right to make changes to these plans prior to exchange of contracts. For further information regarding specific individual plots, please ask your Sales Consultant.

# Plot 11

2 bedroom apartment



## Floorplan key

**W** Wardrobe

**UC** Utility cupboard

NB: Washing machine/dryer in kitchen

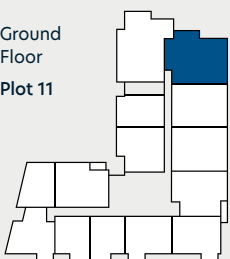


Dimensions	m	ft
Kitchen	3.71 x 1.78	12'2" x 5'10"
Living/Dining Room	6.41 x 4.70	21'0" x 15'5"
Bedroom 1	3.13 x 4.11	10'3" x 13'6"
En Suite	2.08 x 1.74	6'10" x 5'9"
Bedroom 2	3.19 x 4.19	10'6" x 13'9"
Bathroom	2.20 x 1.99	7'3" x 6'6"
<b>Gross Internal Area</b>	<b>88m<sup>2</sup></b>	<b>947ft<sup>2</sup></b>
Balcony	5.49 x 1.60	18'0" x 5'3"
Terrace	9.68 x 3.25	31'9" x 10'8"

## Locator key



Ground Floor  
Plot 11



The floorplans are intended to give a general indication of the proposed floorplan layout. They are not drawn to scale and are not intended to form part of any offer, warranty or representation. Measurements are approximate and are given as a guide and as such must not be relied on as a statement or representation of fact. Total areas shown are maximum and may vary for each unit within a type. Do not use these measurements for carpets, appliance spaces or items of furniture. Kitchen, bathroom and utility layouts and door swings may differ to build and specific plot sizes and layouts may vary within the same unit type. Hyde reserves the right to make changes to these plans prior to exchange of contracts. For further information regarding specific individual plots, please ask your Sales Consultant.

# Plot 15

2 bedroom apartment

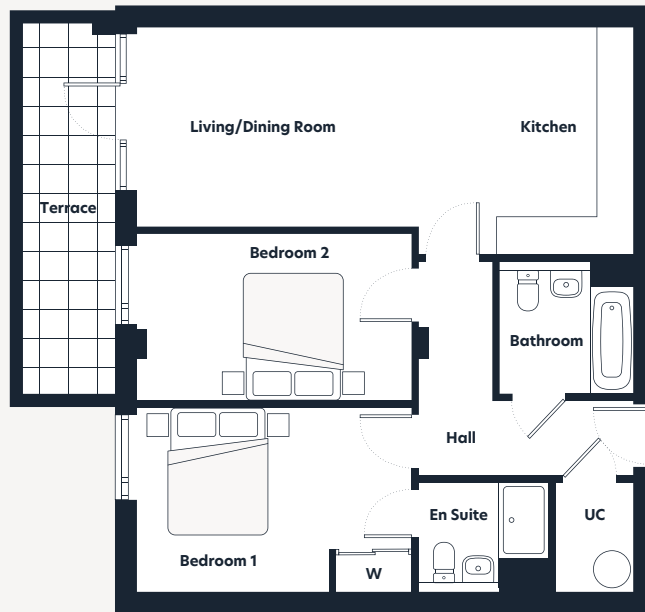


## Floorplan key

**W** Wardrobe

**UC** Utility cupboard

NB: Washing machine/dryer in kitchen

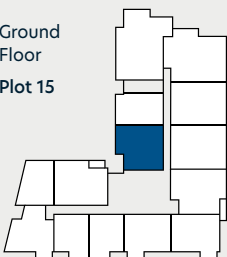


Dimensions	m	ft
Kitchen	3.64 x 2.20	11'11" x 7'3"
Living/Dining Room	3.21 x 5.71	10'6" x 18'9"
Bedroom 1	2.95 x 4.36	9'8" x 14'4"
En Suite	1.75 x 2.07	5'9" x 6'9"
Bedroom 2	2.70 x 4.36	8'10" x 14'4"
Bathroom	2.16 x 2.11	7'1" x 6'11"
<b>Gross Internal Area</b>	<b>72m<sup>2</sup></b>	<b>778ft<sup>2</sup></b>
Terrace	5.92 x 1.50	19'5" x 4'11"

## Locator key



Ground Floor  
Plot 15



The floorplans are intended to give a general indication of the proposed floorplan layout. They are not drawn to scale and are not intended to form part of any offer, warranty or representation. Measurements are approximate and are given as a guide and as such must not be relied on as a statement or representation of fact. Total areas shown are maximum and may vary for each unit within a type. Do not use these measurements for carpets, appliance spaces or items of furniture. Kitchen, bathroom and utility layouts and door swings may differ to build and specific plot sizes and layouts may vary within the same unit type. Hyde reserves the right to make changes to these plans prior to exchange of contracts. For further information regarding specific individual plots, please ask your Sales Consultant.

# Plots 16\*, 31 & 46

2 bedroom apartment



## Floorplan key

- W** Wardrobe
- UC** Utility cupboard
- W/D** Washing machine/dryer

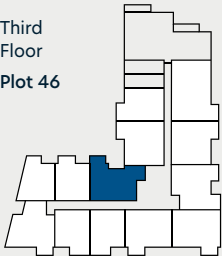
\*NB: Washing machine/dryer in kitchen for Plot 16.



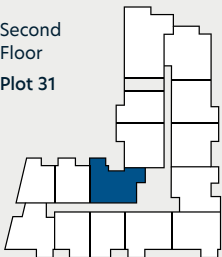
## Locator key



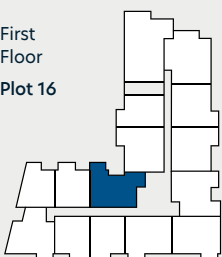
Third Floor  
Plot 46



Second Floor  
Plot 31



First Floor  
Plot 16



Dimensions	m	ft
Kitchen	4.13 x 1.67	13'7" x 5'6"
Living/Dining Room	3.62 x 5.91	11'11" x 19'5"
Bedroom 1	4.85 x 2.95	15'11" x 9'8"
En Suite	1.97 x 1.60	6'6" x 5'3"
Bedroom 2	2.90 x 4.06	9'6" x 13'4"
Bathroom	2.25 x 1.90	7'5" x 6'3"
<b>Gross Internal Area</b>	<b>75m<sup>2</sup></b>	<b>811ft<sup>2</sup></b>
Balcony	3.37 x 1.60	11'1" x 5'3"

The floorplans are intended to give a general indication of the proposed floorplan layout. They are not drawn to scale and are not intended to form part of any offer, warranty or representation. Measurements are approximate and are given as a guide and as such must not be relied on as a statement or representation of fact. Total areas shown are maximum and may vary for each unit within a type. Do not use these measurements for carpets, appliance spaces or items of furniture. Kitchen, bathroom and utility layouts and door swings may differ to build and specific plot sizes and layouts may vary within the same unit type. Hyde reserves the right to make changes to these plans prior to exchange of contracts. For further information regarding specific individual plots, please ask your Sales Consultant.

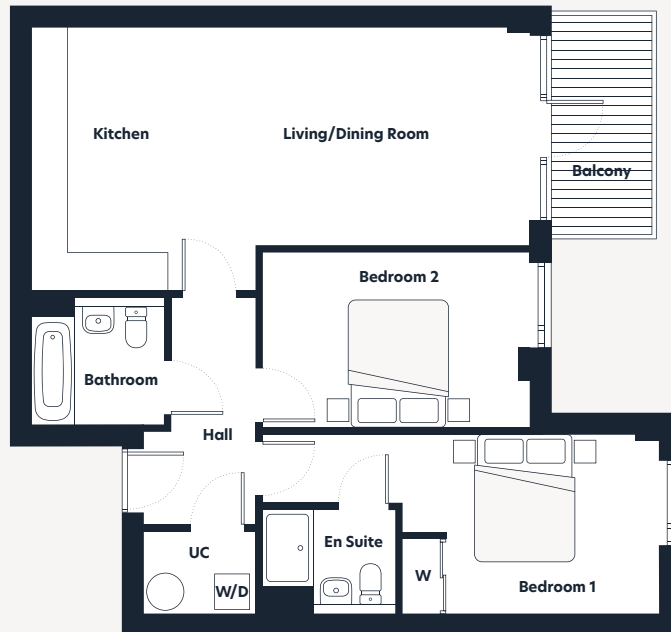
# Plots 24, 39, 54 & 63

2 bedroom apartment



## Floorplan key

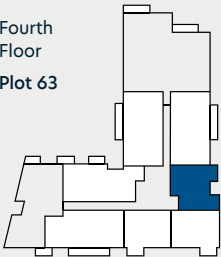
W Wardrobe  
 UC Utility cupboard  
 W/D Washing machine/dryer



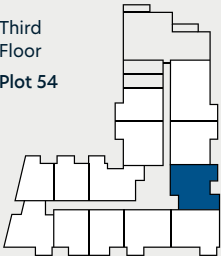
## Locator key

7

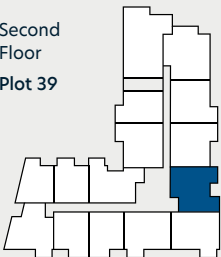
Fourth  
Floor  
Plot 63



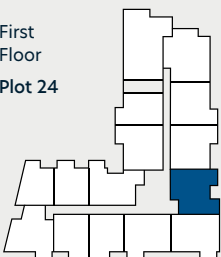
Third  
Floor  
Plot 54



Second  
Floor  
Plot 39



First  
Floor  
Plot 24



Dimensions	m	ft
Kitchen	4.19 x 2.20	13'9" x 7'3"
Living/Dining Room	3.48 x 5.71	11'5" x 18'9"
Bedroom 1	2.85 x 4.04	9'4" x 13'3"
En Suite	2.10 x 1.65	6'11" x 5'5"
Bedroom 2	2.80 x 4.22	9'2" x 13'10"
Bathroom	2.00 x 2.17	6'7" x 7'1"
<b>Gross Internal Area</b>	<b>75m<sup>2</sup></b>	<b>812ft<sup>2</sup></b>
Balcony	3.49 x 1.60	11'5" x 5'3"

The floorplans are intended to give a general indication of the proposed floorplan layout. They are not drawn to scale and are not intended to form part of any offer, warranty or representation. Measurements are approximate and are given as a guide and as such must not be relied on as a statement or representation of fact. Total areas shown are maximum and may vary for each unit within a type. Do not use these measurements for carpets, appliance spaces or items of furniture. Kitchen, bathroom and utility layouts and door swings may differ to build and specific plot sizes and layouts may vary within the same unit type. Hyde reserves the right to make changes to these plans prior to exchange of contracts. For further information regarding specific individual plots, please ask your Sales Consultant.

# Plots 25, 40 & 55

2 bedroom apartment



## Floorplan key

**W** Wardrobe

**UC** Utility cupboard

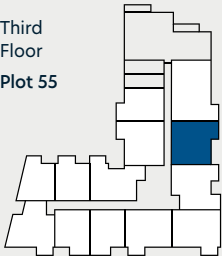
NB: Washing machine/dryer in kitchen



## Locator key



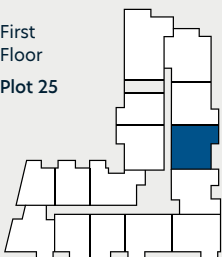
Third Floor  
Plot 55



Second Floor  
Plot 40



First Floor  
Plot 25



Dimensions	m	ft
Kitchen	3.80 x 2.20	12'6" x 7'3"
Living/Dining Room	3.21 x 5.71	10'3" x 18'9"
Bedroom 1	2.84 x 4.37	9'4" x 14'4"
En Suite	2.05 x 1.64	6'9" x 5'5"
Bedroom 2	2.67 x 4.37	8'9" x 14'4"
Bathroom	1.95 x 2.13	6'5" x 7'0"
<b>Gross Internal Area</b>	<b>72m<sup>2</sup></b>	<b>771ft<sup>2</sup></b>
Balcony	3.68 x 1.60	12'0" x 5'3"

The floorplans are intended to give a general indication of the proposed floorplan layout. They are not drawn to scale and are not intended to form part of any offer, warranty or representation. Measurements are approximate and are given as a guide and as such must not be relied on as a statement or representation of fact. Total areas shown are maximum and may vary for each unit within a type. Do not use these measurements for carpets, appliance spaces or items of furniture. Kitchen, bathroom and utility layouts and door swings may differ to build and specific plot sizes and layouts may vary within the same unit type. Hyde reserves the right to make changes to these plans prior to exchange of contracts. For further information regarding specific individual plots, please ask your Sales Consultant.

# Plots 26 & 41

## 2 bedroom apartment



### Floorplan key

**W** Wardrobe

**UC** Utility cupboard

NB: Washing machine/dryer in kitchen

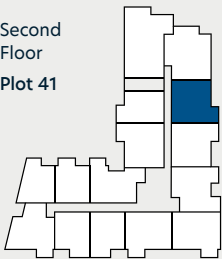


Dimensions	m	ft
Kitchen	3.78 x 2.20	12'5" x 7'3"
Living/Dining Room	3.21 x 5.71	10'6" x 18'9"
Bedroom 1	2.68 x 4.37	8'10" x 14'4"
En Suite	2.06 x 1.63	6'9" x 5'4"
Bedroom 2	2.83 x 4.37	9'3" x 14'4"
Bathroom	1.96 x 2.13	6'5" x 7'0"
<b>Gross Internal Area</b>	<b>72m<sup>2</sup></b>	<b>770ft<sup>2</sup></b>
Balcony	3.59 x 1.60	11'9" x 5'3"

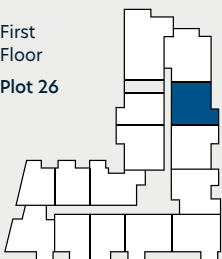
### Locator key



Second Floor  
Plot 41



First Floor  
Plot 26



The floorplans are intended to give a general indication of the proposed floorplan layout. They are not drawn to scale and are not intended to form part of any offer, warranty or representation. Measurements are approximate and are given as a guide and as such must not be relied on as a statement or representation of fact. Total areas shown are maximum and may vary for each unit within a type. Do not use these measurements for carpets, appliance spaces or items of furniture. Kitchen, bathroom and utility layouts and door swings may differ to build and specific plot sizes and layouts may vary within the same unit type. Hyde reserves the right to make changes to these plans prior to exchange of contracts. For further information regarding specific individual plots, please ask your Sales Consultant.

# Plots 27 & 42

2 bedroom apartment



## Floorplan key

- W** Wardrobe
- UC** Utility cupboard
- W/D** Washing machine/dryer

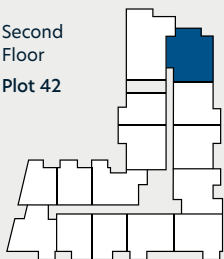


Dimensions	m	ft
Kitchen	3.71 x 2.10	12'2" x 6'11"
Living/Dining Room	4.70 x 6.41	15'5" x 21'0"
Bedroom 1	3.13 x 4.00	10'3" x 13'1"
En Suite	2.08 x 1.74	6'10" x 5'9"
Bedroom 2	3.19 x 4.19	10'6" x 13'9"
Bathroom	2.20 x 1.99	7'3" x 6'6"
<b>Gross Internal Area</b>	<b>88m<sup>2</sup></b>	<b>947ft<sup>2</sup></b>
Balcony	5.49 x 1.60	18'0" x 5'3"

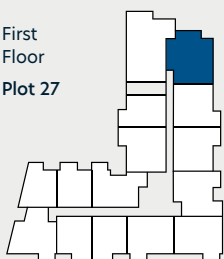
## Locator key



Second Floor  
Plot 42



First Floor  
Plot 27



The floorplans are intended to give a general indication of the proposed floorplan layout. They are not drawn to scale and are not intended to form part of any offer, warranty or representation. Measurements are approximate and are given as a guide and as such must not be relied on as a statement or representation of fact. Total areas shown are maximum and may vary for each unit within a type. Do not use these measurements for carpets, appliance spaces or items of furniture. Kitchen, bathroom and utility layouts and door swings may differ to build and specific plot sizes and layouts may vary within the same unit type. Hyde reserves the right to make changes to these plans prior to exchange of contracts. For further information regarding specific individual plots, please ask your Sales Consultant.

# Plots 30, 45 & 58

## 2 bedroom apartment

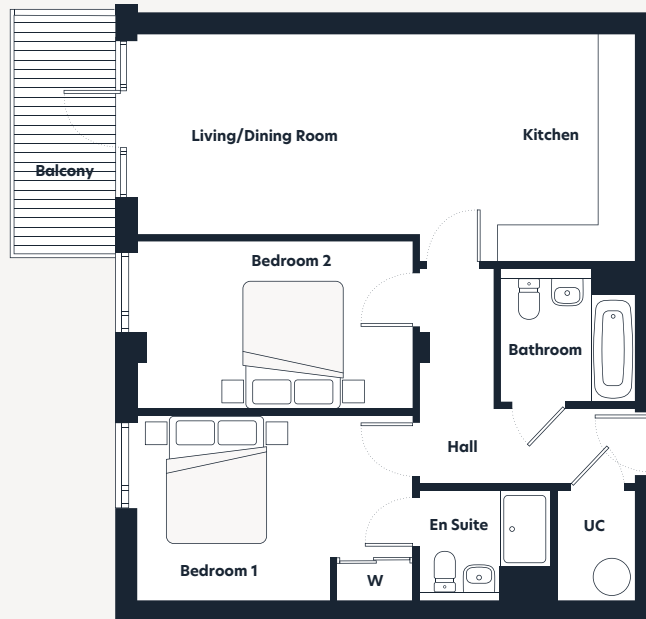


### Floorplan key

**W** Wardrobe

**UC** Utility cupboard

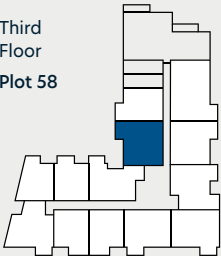
NB: Washing machine/dryer in kitchen



### Locator key



Third Floor  
Plot 58



Second Floor  
Plot 45



First Floor  
Plot 30



Dimensions	m	ft
Kitchen	3.64 x 2.20	11'11" x 7'2"
Living/Dining Room	3.21 x 5.71	10'3" x 18'9"
Bedroom 1	2.95 x 4.36	9'8" x 14'1"
En Suite	1.75 x 2.07	5'9" x 6'9"
Bedroom 2	2.67 x 4.36	8'9" x 14'4"
Bathroom	2.14 x 2.11	7'10" x 6'11"
<b>Gross Internal Area</b>	<b>72m<sup>2</sup></b>	<b>778ft<sup>2</sup></b>
Balcony	3.80 x 1.60	12'6" x 5'3"

The floorplans are intended to give a general indication of the proposed floorplan layout. They are not drawn to scale and are not intended to form part of any offer, warranty or representation. Measurements are approximate and are given as a guide and as such must not be relied on as a statement or representation of fact. Total areas shown are maximum and may vary for each unit within a type. Do not use these measurements for carpets, appliance spaces or items of furniture. Kitchen, bathroom and utility layouts and door swings may differ to build and specific plot sizes and layouts may vary within the same unit type. Hyde reserves the right to make changes to these plans prior to exchange of contracts. For further information regarding specific individual plots, please ask your Sales Consultant.

# Plot 56

2 bedroom apartment



## Floorplan key

- W** Wardrobe
- UC** Utility cupboard
- W/D** Washing machine/dryer

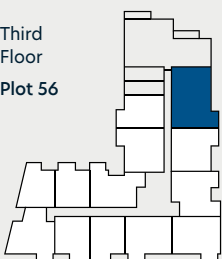


Dimensions	m	ft
Kitchen	3.73 x 2.10	12'3" x 6'11"
Living/Dining Room	3.31 x 5.81	10'10" x 19'0"
Bedroom 1	2.84 x 3.90	9'4" x 12'10"
En Suite	1.64 x 1.98	5'5" x 6'6"
Bedroom 2	2.69 x 4.50	8'10" x 14'9"
Bathroom	2.13 x 2.00	7'0" x 6'7"
<b>Gross Internal Area</b>	<b>73m<sup>2</sup></b>	<b>785ft<sup>2</sup></b>
Balcony	3.59 x 1.60	11'9" x 5'3"
Terrace	7.75 x 3.21	25'5" x 10'6"

## Locator key



Third Floor  
Plot 56



The floorplans are intended to give a general indication of the proposed floorplan layout. They are not drawn to scale and are not intended to form part of any offer, warranty or representation. Measurements are approximate and are given as a guide and as such must not be relied on as a statement or representation of fact. Total areas shown are maximum and may vary for each unit within a type. Do not use these measurements for carpets, appliance spaces or items of furniture. Kitchen, bathroom and utility layouts and door swings may differ to build and specific plot sizes and layouts may vary within the same unit type. Hyde reserves the right to make changes to these plans prior to exchange of contracts. For further information regarding specific individual plots, please ask your Sales Consultant.

# Plot 12

3 bedroom apartment



## Floorplan key

- S** Storage space
- W** Wardrobe
- UC** Utility cupboard
- W/D** Washing machine/dryer

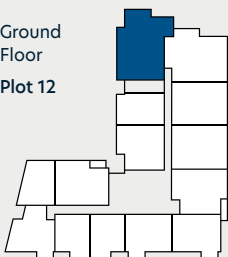


Dimensions	m	ft
Kitchen	4.47 x 2.78	14'8" x 9'1"
Living/Dining Room	5.77 x 4.66	18'11" x 15'3"
Bedroom 1	3.98 x 3.87	13'1" x 12'8"
En Suite	2.03 x 1.63	6'8" x 5'4"
Bedroom 2	2.80 x 4.47	9'2" x 14'8"
Bedroom 3	2.73 x 4.47	8'11" x 14'8"
Bathroom	1.98 x 2.03	6'6" x 6'8"
<b>Gross Internal Area</b>	<b>114m<sup>2</sup></b>	<b>1224ft<sup>2</sup></b>
Balcony	5.49 x 1.60	18'0" x 5'3"
Terrace	11.04 x 1.50	36'3" x 4'11"

## Locator key



Ground Floor  
Plot 12



The floorplans are intended to give a general indication of the proposed floorplan layout. They are not drawn to scale and are not intended to form part of any offer, warranty or representation. Measurements are approximate and are given as a guide and as such must not be relied on as a statement or representation of fact. Total areas shown are maximum and may vary for each unit within a type. Do not use these measurements for carpets, appliance spaces or items of furniture. Kitchen, bathroom and utility layouts and door swings may differ to build and specific plot sizes and layouts may vary within the same unit type. Hyde reserves the right to make changes to these plans prior to exchange of contracts. For further information regarding specific individual plots, please ask your Sales Consultant.

# Plots 28 & 43

3 bedroom apartment



## Floorplan key

- S** Storage space
- W** Wardrobe
- UC** Utility cupboard
- W/D** Washing machine/dryer



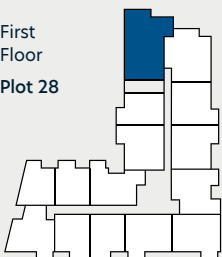
## Locator key



Second Floor  
Plot 43



First Floor  
Plot 28



Dimensions	m	ft
Kitchen	4.47 x 2.78	14'8" x 9'1"
Living/Dining Room	4.66 x 5.77	15'3" x 18'11"
Bedroom 1	3.98 x 3.87	13'0" x 12'8"
En Suite	2.03 x 1.63	6'8" x 5'4"
Bedroom 2	2.80 x 4.47	9'2" x 14'8"
Bedroom 3	2.73 x 4.47	8'11" x 14'8"
Bathroom	1.98 x 2.03	6'6" x 6'8"
<b>Gross Internal Area</b>	<b>114m<sup>2</sup></b>	<b>1224ft<sup>2</sup></b>
Balcony	5.59 x 1.60	18'4" x 5'3"

The floorplans are intended to give a general indication of the proposed floorplan layout. They are not drawn to scale and are not intended to form part of any offer, warranty or representation. Measurements are approximate and are given as a guide and as such must not be relied on as a statement or representation of fact. Total areas shown are maximum and may vary for each unit within a type. Do not use these measurements for carpets, appliance spaces or items of furniture. Kitchen, bathroom and utility layouts and door swings may differ to build and specific plot sizes and layouts may vary within the same unit type. Hyde reserves the right to make changes to these plans prior to exchange of contracts. For further information regarding specific individual plots, please ask your Sales Consultant.

# Plot 59

3 bedroom apartment



## Floorplan key

W Wardrobe  
 UC Utility cupboard  
 W/D Washing machine/dryer

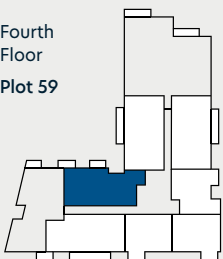


Dimensions	m	ft
Kitchen	5.21 x 2.21	17'1" x 7'3"
Living/Dining Room	3.41 x 5.38	11'2" x 17'8"
Bedroom 1	4.85 x 2.95	15'11" x 9'8"
En Suite	1.97 x 1.60	6'6" x 5'3"
Bedroom 2	2.90 x 4.06	9'6" x 13'4"
Bedroom 3	3.00 x 3.92	9'10" x 12'10"
Bathroom	2.25 x 1.90	7'5" x 6'3"
<b>Gross Internal Area</b>	<b>98m<sup>2</sup></b>	<b>1056ft<sup>2</sup></b>
Terrace	7.43 x 2.35	24'5" x 7'9"

## Locator key



Fourth  
 Floor  
 Plot 59



The floorplans are intended to give a general indication of the proposed floorplan layout. They are not drawn to scale and are not intended to form part of any offer, warranty or representation. Measurements are approximate and are given as a guide and as such must not be relied on as a statement or representation of fact. Total areas shown are maximum and may vary for each unit within a type. Do not use these measurements for carpets, appliance spaces or items of furniture. Kitchen, bathroom and utility layouts and door swings may differ to build and specific plot sizes and layouts may vary within the same unit type. Hyde reserves the right to make changes to these plans prior to exchange of contracts. For further information regarding specific individual plots, please ask your Sales Consultant.

# Plot 60

3 bedroom apartment

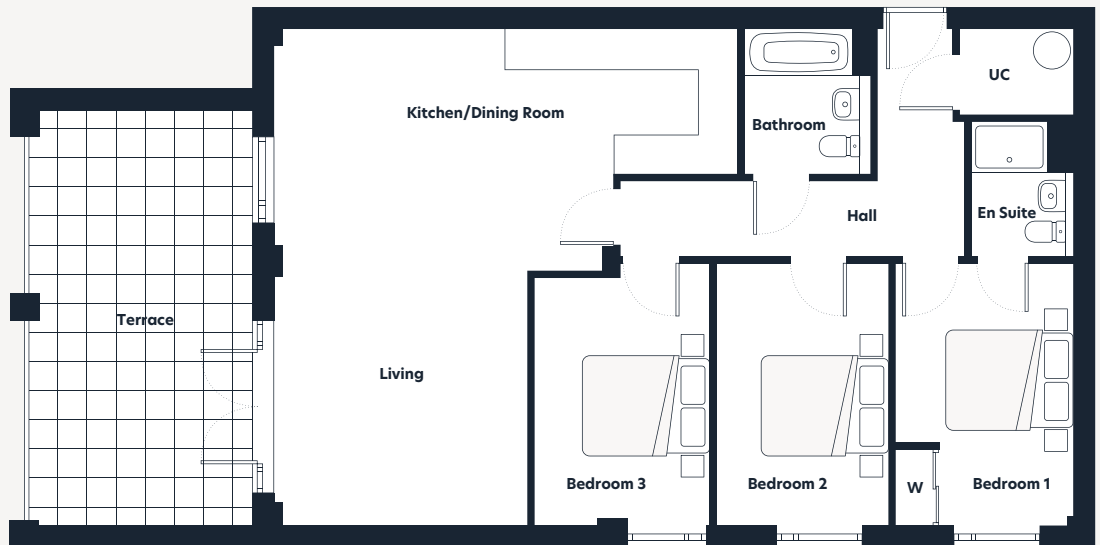


## Floorplan key

**W** Wardrobe

**UC** Utility cupboard

NB: Washing machine/dryer in kitchen

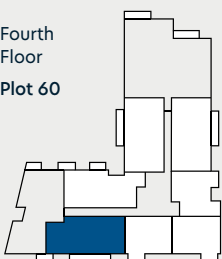


Dimensions	m	ft
Kitchen	3.70 x 2.30	12'2" x 7'7"
Living/Dining Room	4.00 x 7.85	13'1" x 25'9"
Bedroom 1	2.83 x 4.15	9'3" x 13'7"
En Suite	1.63 x 2.12	5'4" x 6'11"
Bedroom 2	2.75 x 4.15	9'0" x 13'7"
Bedroom 3	2.80 x 4.15	9'2" x 13'7"
Bathroom	2.00 x 2.29	6'7" x 7'6"
<b>Gross Internal Area</b>	<b>101m<sup>2</sup></b>	<b>1089ft<sup>2</sup></b>
Terrace	6.44 x 3.55	21'2" x 11'8"

## Locator key



Fourth  
Floor  
Plot 60



The floorplans are intended to give a general indication of the proposed floorplan layout. They are not drawn to scale and are not intended to form part of any offer, warranty or representation. Measurements are approximate and are given as a guide and as such must not be relied on as a statement or representation of fact. Total areas shown are maximum and may vary for each unit within a type. Do not use these measurements for carpets, appliance spaces or items of furniture. Kitchen, bathroom and utility layouts and door swings may differ to build and specific plot sizes and layouts may vary within the same unit type. Hyde reserves the right to make changes to these plans prior to exchange of contracts. For further information regarding specific individual plots, please ask your Sales Consultant.

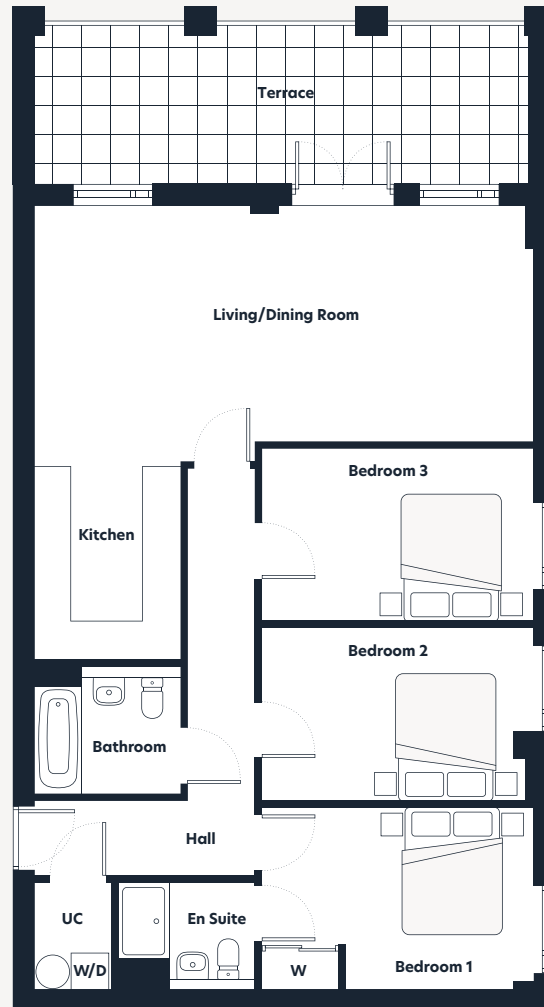
# Plot 64

3 bedroom apartment



## Floorplan key

W Wardrobe  
 UC Utility cupboard  
 W/D Washing machine/dryer

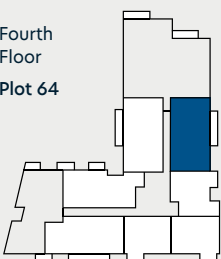


Dimensions	m	ft
Kitchen	2.35 x 3.15	7'9" x 10'4"
Living/Dining Room	3.72 x 7.91	12'2" x 25'11"
Bedroom 1	2.86 x 4.28	9'5" x 14'1"
En Suite	1.66 x 2.14	5'5" x 7'0"
Bedroom 2	2.75 x 4.28	9'0" x 14'1"
Bedroom 3	2.75 x 4.28	9'0" x 14'1"
Bathroom	2.00 x 2.34	6'7" x 7'8"
<b>Gross Internal Area</b>	<b>100m<sup>2</sup></b>	<b>1079ft<sup>2</sup></b>
Terrace	7.83 x 2.53	25'8" x 8'4"

## Locator key



Fourth  
 Floor  
 Plot 64



The floorplans are intended to give a general indication of the proposed floorplan layout. They are not drawn to scale and are not intended to form part of any offer, warranty or representation. Measurements are approximate and are given as a guide and as such must not be relied on as a statement or representation of fact. Total areas shown are maximum and may vary for each unit within a type. Do not use these measurements for carpets, appliance spaces or items of furniture. Kitchen, bathroom and utility layouts and door swings may differ to build and specific plot sizes and layouts may vary within the same unit type. Hyde reserves the right to make changes to these plans prior to exchange of contracts. For further information regarding specific individual plots, please ask your Sales Consultant.

# Plot 65

3 bedroom apartment



## Floorplan key

- W** Wardrobe
- UC** Utility cupboard
- W/D** Washing machine/dryer

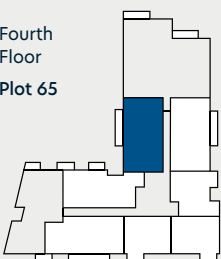


Dimensions	m	ft
Kitchen	2.35 x 3.15	7'9" x 10'4"
Living/Dining Room	3.72 x 7.91	12'2" x 25'11"
Bedroom 1	2.97 x 4.28	9'9" x 14'1"
En Suite	1.77 x 2.16	5'10" x 7'1"
Bedroom 2	2.75 x 4.28	9'0" x 14'1"
Bedroom 3	2.75 x 4.28	9'0" x 14'1"
Bathroom	2.33 x 2.00	7'8" x 6'7"
<b>Gross Internal Area</b>	<b>100m<sup>2</sup></b>	<b>1072ft<sup>2</sup></b>
Terrace	7.83 x 2.53	25'8" x 8'4"

## Locator key



Fourth Floor  
Plot 65



The floorplans are intended to give a general indication of the proposed floorplan layout. They are not drawn to scale and are not intended to form part of any offer, warranty or representation. Measurements are approximate and are given as a guide and as such must not be relied on as a statement or representation of fact. Total areas shown are maximum and may vary for each unit within a type. Do not use these measurements for carpets, appliance spaces or items of furniture. Kitchen, bathroom and utility layouts and door swings may differ to build and specific plot sizes and layouts may vary within the same unit type. Hyde reserves the right to make changes to these plans prior to exchange of contracts. For further information regarding specific individual plots, please ask your Sales Consultant.

# Pipistrelle House



Image of Riverside Square show apartment interior.

# Plot 67

1 bedroom apartment



## Floorplan key

**W** Wardrobe

**UC** Utility cupboard

NB: Washing machine/dryer in kitchen

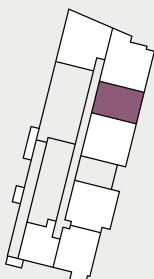


Dimensions	m	ft
Kitchen	3.51 x 2.20	11'6" x 7'3"
Living/Dining Room	3.56 x 5.44	11'8" x 17'10"
Bedroom	3.03 x 4.10	9'11" x 13'5"
Bathroom	2.00 x 1.84	6'7" x 6'0"
<b>Gross Internal Area</b>	<b>52m<sup>2</sup></b>	<b>558ft<sup>2</sup></b>
Terrace	6.76 x 1.50	22'2" x 4'11"

## Locator key



Ground  
Floor  
Plot 67



The floorplans are intended to give a general indication of the proposed floorplan layout. They are not drawn to scale and are not intended to form part of any offer, warranty or representation. Measurements are approximate and are given as a guide and as such must not be relied on as a statement or representation of fact. Total areas shown are maximum and may vary for each unit within a type. Do not use these measurements for carpets, appliance spaces or items of furniture. Kitchen, bathroom and utility layouts and door swings may differ to build and specific plot sizes and layouts may vary within the same unit type. Hyde reserves the right to make changes to these plans prior to exchange of contracts. For further information regarding specific individual plots, please ask your Sales Consultant.

# Plot 70

1 bedroom apartment



### Floorplan key

**W** Wardrobe

**UC** Utility cupboard

NB: Washing machine/dryer in kitchen

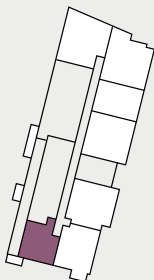


Dimensions	m	ft
Kitchen	3.80 x 1.80	12'6" x 5'11"
Living/Dining Room	3.80 x 4.57	12'6" x 15'0"
Bedroom	3.35 x 3.80	11'0" x 12'6"
Bathroom	2.00 x 2.04	6'7" x 6'8"
<b>Gross Internal Area</b>	<b>51m<sup>2</sup></b>	<b>545ft<sup>2</sup></b>
Terrace	3.60 x 1.30	11'10" x 4'3"

### Locator key



Ground Floor  
Plot 70



The floorplans are intended to give a general indication of the proposed floorplan layout. They are not drawn to scale and are not intended to form part of any offer, warranty or representation. Measurements are approximate and are given as a guide and as such must not be relied on as a statement or representation of fact. Total areas shown are maximum and may vary for each unit within a type. Do not use these measurements for carpets, appliance spaces or items of furniture. Kitchen, bathroom and utility layouts and door swings may differ to build and specific plot sizes and layouts may vary within the same unit type. Hyde reserves the right to make changes to these plans prior to exchange of contracts. For further information regarding specific individual plots, please ask your Sales Consultant.

# Plots 74 & 85

1 bedroom apartment

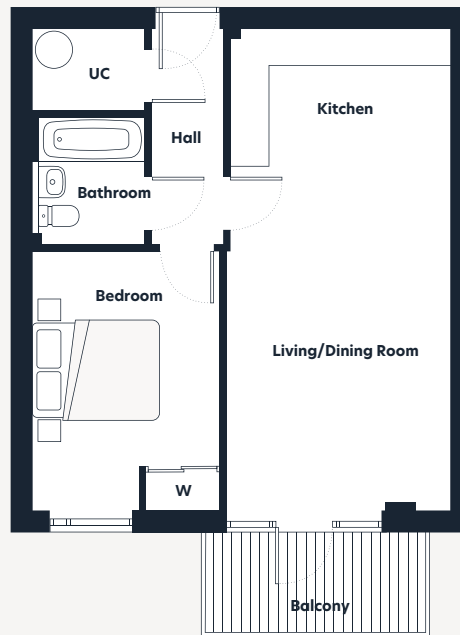


## Floorplan key

**W** Wardrobe

**UC** Utility cupboard

NB: Washing machine/dryer in kitchen

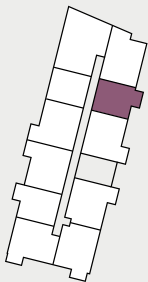


Dimensions	m	ft
Kitchen	3.51 x 2.20	11'6" x 7'3"
Living/Dining Room	3.56 x 5.44	11'8" x 17'10"
Bedroom	3.03 x 4.10	9'11" x 13'5"
Bathroom	2.00 x 1.84	6'7" x 6'0"
<b>Gross Internal Area</b>	<b>52m<sup>2</sup></b>	<b>558ft<sup>2</sup></b>
Balcony	3.55 x 1.60	12'0" x 5'3"

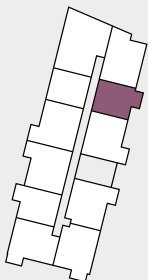
## Locator key

7

Second Floor  
Plot 85



First Floor  
Plot 74



The floorplans are intended to give a general indication of the proposed floorplan layout. They are not drawn to scale and are not intended to form part of any offer, warranty or representation. Measurements are approximate and are given as a guide and as such must not be relied on as a statement or representation of fact. Total areas shown are maximum and may vary for each unit within a type. Do not use these measurements for carpets, appliance spaces or items of furniture. Kitchen, bathroom and utility layouts and door swings may differ to build and specific plot sizes and layouts may vary within the same unit type. Hyde reserves the right to make changes to these plans prior to exchange of contracts. For further information regarding specific individual plots, please ask your Sales Consultant.

# Plots 77 & 88

1 bedroom apartment

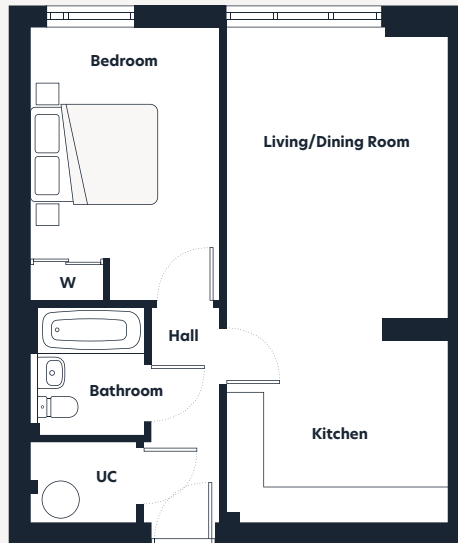


## Floorplan key

**W** Wardrobe

**UC** Utility cupboard

NB: Washing machine/dryer in kitchen

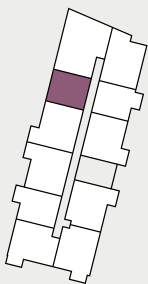


Dimensions	m	ft
Kitchen	3.56 x 2.10	11'8" x 6'11"
Living/Dining Room	3.56 x 5.76	11'8" x 18'11"
Bedroom	3.03 x 4.32	9'11" x 14'2"
Bathroom	2.00 x 1.84	6'7" x 6'0"
<b>Gross Internal Area</b>	<b>53m<sup>2</sup></b>	<b>566ft<sup>2</sup></b>

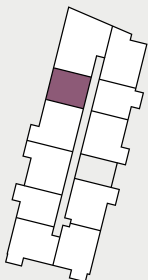
## Locator key



Second Floor  
Plot 88



First Floor  
Plot 77



The floorplans are intended to give a general indication of the proposed floorplan layout. They are not drawn to scale and are not intended to form part of any offer, warranty or representation. Measurements are approximate and are given as a guide and as such must not be relied on as a statement or representation of fact. Total areas shown are maximum and may vary for each unit within a type. Do not use these measurements for carpets, appliance spaces or items of furniture. Kitchen, bathroom and utility layouts and door swings may differ to build and specific plot sizes and layouts may vary within the same unit type. Hyde reserves the right to make changes to these plans prior to exchange of contracts. For further information regarding specific individual plots, please ask your Sales Consultant.

# Plots 80, 91 & 100

1 bedroom apartment

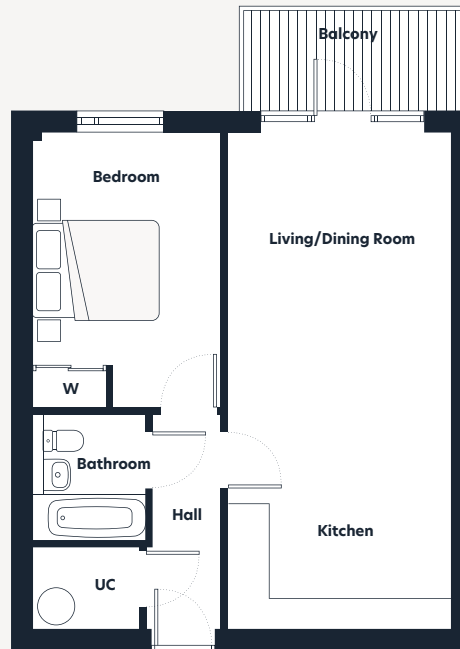


## Floorplan key

**W** Wardrobe

**UC** Utility cupboard

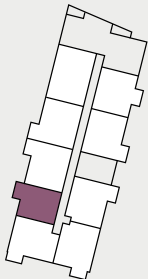
NB: Washing machine/dryer in kitchen



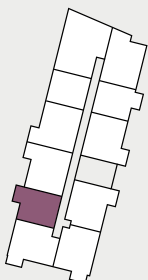
## Locator key



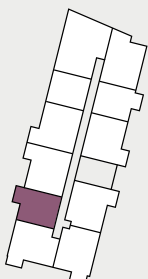
Third Floor  
Plot 100



Second Floor  
Plot 91



First Floor  
Plot 80



Dimensions	m	ft
Kitchen	3.57 x 2.10	11'9" x 6'11"
Living/Dining Room	3.57 x 5.76	11'9" x 18'11"
Bedroom	3.02 x 4.31	9'11" x 14'2"
Bathroom	2.00 x 1.83	6'8" x 6'0"
<b>Gross Internal Area</b>	<b>53m<sup>2</sup></b>	<b>575ft<sup>2</sup></b>
Balcony	3.55 x 1.60	11'8" x 5'3"

The floorplans are intended to give a general indication of the proposed floorplan layout. They are not drawn to scale and are not intended to form part of any offer, warranty or representation. Measurements are approximate and are given as a guide and as such must not be relied on as a statement or representation of fact. Total areas shown are maximum and may vary for each unit within a type. Do not use these measurements for carpets, appliance spaces or items of furniture. Kitchen, bathroom and utility layouts and door swings may differ to build and specific plot sizes and layouts may vary within the same unit type. Hyde reserves the right to make changes to these plans prior to exchange of contracts. For further information regarding specific individual plots, please ask your Sales Consultant.

# Plot 96

1 bedroom apartment



### Floorplan key

**W** Wardrobe

**UC** Utility cupboard

NB: Washing machine/dryer in kitchen

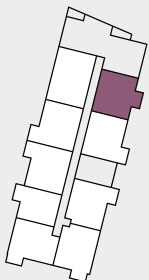


Dimensions	m	ft
Kitchen	3.60 x 2.20	11'10" x 7'3"
Living/Dining Room	3.65 x 5.44	12'00" x 17'10"
Bedroom	3.03 x 4.10	9'11" x 13'5"
Bathroom	2.00 x 1.84	6'7" x 6'0"
<b>Gross Internal Area</b>	<b>53m<sup>2</sup></b>	<b>573ft<sup>2</sup></b>
Terrace	7.49 x 1.64	24'10" x 5'5"
Balcony	3.55 x 1.60	11'8" x 5'3"

### Locator key



Third Floor  
Plot 96



The floorplans are intended to give a general indication of the proposed floorplan layout. They are not drawn to scale and are not intended to form part of any offer, warranty or representation. Measurements are approximate and are given as a guide and as such must not be relied on as a statement or representation of fact. Total areas shown are maximum and may vary for each unit within a type. Do not use these measurements for carpets, appliance spaces or items of furniture. Kitchen, bathroom and utility layouts and door swings may differ to build and specific plot sizes and layouts may vary within the same unit type. Hyde reserves the right to make changes to these plans prior to exchange of contracts. For further information regarding specific individual plots, please ask your Sales Consultant.

# Plot 66

2 bedroom apartment



## Floorplan key

**W** Wardrobe

**UC** Utility cupboard

NB: Washing machine/dryer in kitchen

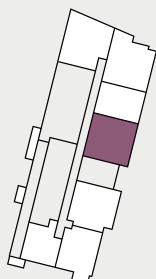


Dimensions	m	ft
Kitchen	3.84 x 2.36	12'7" x 7'9"
Living/Dining Room	3.21 x 5.28	10'6" x 17'4"
Bedroom 1	2.98 x 4.10	9'9" x 13'5"
En Suite	1.68 x 2.02	5'6" x 6'8"
Bedroom 2	2.83 x 4.10	9'3" x 13'5"
Bathroom	2.05 x 2.13	6'8" x 7'0"
<b>Gross Internal Area</b>	<b>71m<sup>2</sup></b>	<b>769ft<sup>2</sup></b>
Terrace	9.24 x 1.50	30'4" x 4'11"

## Locator key



Ground Floor  
Plot 66



The floorplans are intended to give a general indication of the proposed floorplan layout. They are not drawn to scale and are not intended to form part of any offer, warranty or representation. Measurements are approximate and are given as a guide and as such must not be relied on as a statement or representation of fact. Total areas shown are maximum and may vary for each unit within a type. Do not use these measurements for carpets, appliance spaces or items of furniture. Kitchen, bathroom and utility layouts and door swings may differ to build and specific plot sizes and layouts may vary within the same unit type. Hyde reserves the right to make changes to these plans prior to exchange of contracts. For further information regarding specific individual plots, please ask your Sales Consultant.

# Plot 68

2 bedroom apartment

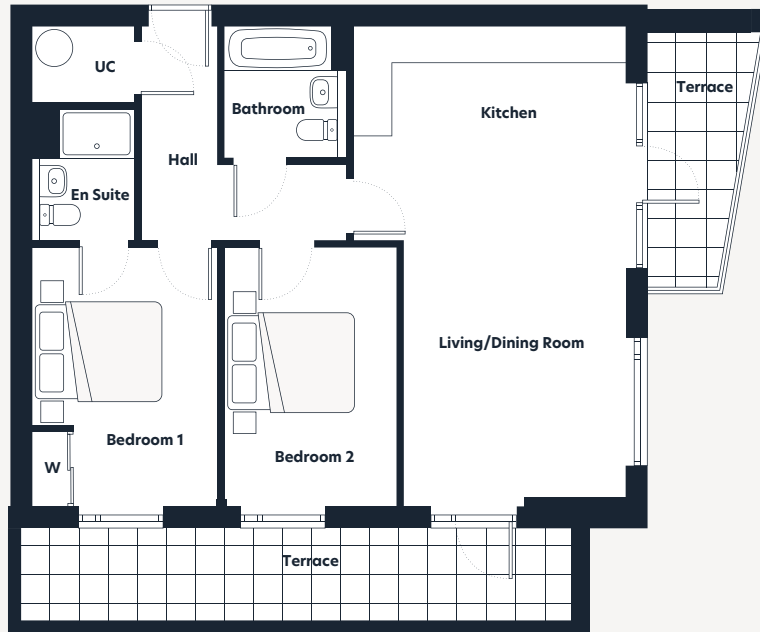


### Floorplan key

**W** Wardrobe

**UC** Utility cupboard

NB: Washing machine/dryer in kitchen

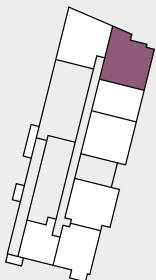


Dimensions	m	ft
Kitchen	4.30 x 1.77	14'1" x 5'10"
Living/Dining Room	3.52 x 5.87	11'7" x 19'3"
Bedroom 1	2.98 x 4.10	9'9" x 13'5"
En Suite	1.65 x 2.09	5'5" x 6'10"
Bedroom 2	2.75 x 4.10	9'0" x 13'5"
Bathroom	1.96 x 2.13	6'5" x 7'0"
<b>Gross Internal Area</b>	<b>74m<sup>2</sup></b>	<b>796ft<sup>2</sup></b>
Terrace	4.07 x 1.68	13'4" x 5'6"
Terrace	8.76 x 1.50	28'9" x 4'11"

### Locator key



Ground Floor  
Plot 68



The floorplans are intended to give a general indication of the proposed floorplan layout. They are not drawn to scale and are not intended to form part of any offer, warranty or representation. Measurements are approximate and are given as a guide and as such must not be relied on as a statement or representation of fact. Total areas shown are maximum and may vary for each unit within a type. Do not use these measurements for carpets, appliance spaces or items of furniture. Kitchen, bathroom and utility layouts and door swings may differ to build and specific plot sizes and layouts may vary within the same unit type. Hyde reserves the right to make changes to these plans prior to exchange of contracts. For further information regarding specific individual plots, please ask your Sales Consultant.

# Plot 69

2 bedroom apartment



## Floorplan key

- W** Wardrobe
- UC** Utility cupboard
- W/D** Washing machine/dryer

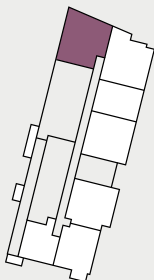


Dimensions	m	ft
Kitchen	4.31 x 2.11	14'2" x 6'11"
Living/Dining Room	3.47 x 7.14	11'6" x 23'5"
Bedroom 1	3.29 x 3.62	10'10" x 11'11"
En Suite	2.09 x 1.65	6'10" x 5'5"
Bedroom 2	2.69 x 5.99	8'10" x 19'8"
Bathroom	2.13 x 2.00	7'0" x 6'7"
<b>Gross Internal Area</b>	<b>90m<sup>2</sup></b>	<b>973ft<sup>2</sup></b>
Terrace	3.22 x 1.74	10'7" x 5'9"

## Locator key



Ground Floor  
Plot 69



The floorplans are intended to give a general indication of the proposed floorplan layout. They are not drawn to scale and are not intended to form part of any offer, warranty or representation. Measurements are approximate and are given as a guide and as such must not be relied on as a statement or representation of fact. Total areas shown are maximum and may vary for each unit within a type. Do not use these measurements for carpets, appliance spaces or items of furniture. Kitchen, bathroom and utility layouts and door swings may differ to build and specific plot sizes and layouts may vary within the same unit type. Hyde reserves the right to make changes to these plans prior to exchange of contracts. For further information regarding specific individual plots, please ask your Sales Consultant.

# Plots 71, 82, 93 & 102

2 bedroom apartment



## Floorplan key

**W** Wardrobe

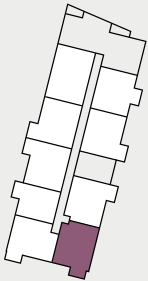
**UC** Utility cupboard

NB: Washing machine/dryer in kitchen

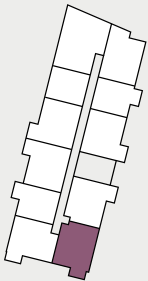
## Locator key



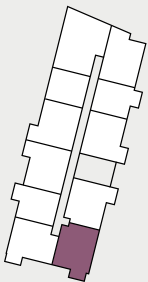
Third Floor  
Plot 102



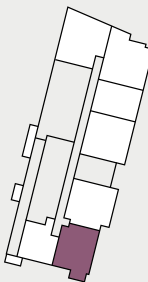
Second Floor  
Plot 93



First Floor  
Plot 82



Ground Floor  
Plot 71



Wardrobe to Plot 71 as shown

Wardrobe to Plots 82, 93 & 102 as shown

## Dimensions

**m**      **ft**

Kitchen	3.86 x 2.20	12'8" x 7'3"
Living/Dining Room	3.33 x 5.44	10'11" x 17'10"
Bedroom 1	3.00 x 4.10	9'10" x 13'5"
En Suite	1.61 x 2.05	5'3" x 6'9"
Bedroom 2	2.75 x 4.10	9'0" x 13'5"
Bathroom	2.00 x 2.13	6'7" x 7'0"
<b>Gross Internal Area</b>	<b>71m<sup>2</sup></b>	<b>766ft<sup>2</sup></b>
Balcony	3.55 x 1.60	11'8" x 5'3"

The floorplans are intended to give a general indication of the proposed floorplan layout. They are not drawn to scale and are not intended to form part of any offer, warranty or representation. Measurements are approximate and are given as a guide and as such must not be relied on as a statement or representation of fact. Total areas shown are maximum and may vary for each unit within a type. Do not use these measurements for carpets, appliance spaces or items of furniture. Kitchen, bathroom and utility layouts and door swings may differ to build and specific plot sizes and layouts may vary within the same unit type. Hyde reserves the right to make changes to these plans prior to exchange of contracts. For further information regarding specific individual plots, please ask your Sales Consultant.

# Plot 72

2 bedroom apartment



## Floorplan key

**W** Wardrobe

**UC** Utility cupboard

NB: Washing machine/dryer in kitchen

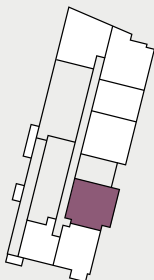


Dimensions	m	ft
Kitchen	4.02 x 2.25	13'2" x 7'5"
Living/Dining Room	3.21 x 5.28	10'6" x 17'4"
Bedroom 1	3.00 x 4.10	9'10" x 13'5"
En Suite	1.61 x 2.05	5'3" x 6'9"
Bedroom 2	2.75 x 4.10	9'0" x 13'5"
Bathroom	2.00 x 2.13	6'7" x 7'0"
<b>Gross Internal Area</b>	<b>70m<sup>2</sup></b>	<b>757ft<sup>2</sup></b>
Terrace	8.11 x 1.50	26'7" x 4'11"

## Locator key



Ground Floor  
Plot 72



The floorplans are intended to give a general indication of the proposed floorplan layout. They are not drawn to scale and are not intended to form part of any offer, warranty or representation. Measurements are approximate and are given as a guide and as such must not be relied on as a statement or representation of fact. Total areas shown are maximum and may vary for each unit within a type. Do not use these measurements for carpets, appliance spaces or items of furniture. Kitchen, bathroom and utility layouts and door swings may differ to build and specific plot sizes and layouts may vary within the same unit type. Hyde reserves the right to make changes to these plans prior to exchange of contracts. For further information regarding specific individual plots, please ask your Sales Consultant.

# Plots 73, 84 & 95

2 bedroom apartment



## Floorplan key

**W** Wardrobe

**UC** Utility cupboard

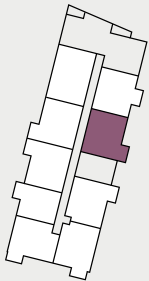
NB: Washing machine/dryer in kitchen



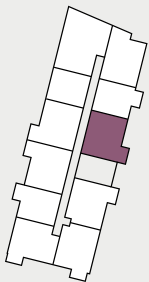
## Locator key



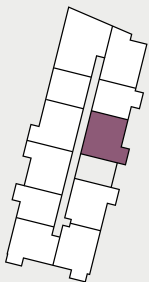
Third Floor  
Plot 95



Second Floor  
Plot 84



First Floor  
Plot 73



Dimensions	m	ft
Kitchen	3.84 x 2.20	12'7" x 7'3"
Living/Dining Room	3.21 x 5.44	10'6" x 17'10"
Bedroom 1	2.98 x 4.10	9'9" x 13'5"
En Suite	1.67 x 2.09	5'6" x 6'10"
Bedroom 2	2.83 x 4.10	9'3" x 13'5"
Bathroom	2.05 x 2.13	6'8" x 7'0"
<b>Gross Internal Area</b>	<b>71m<sup>2</sup></b>	<b>769ft<sup>2</sup></b>
Balcony	3.55 x 1.60	11'8" x 5'3"

The floorplans are intended to give a general indication of the proposed floorplan layout. They are not drawn to scale and are not intended to form part of any offer, warranty or representation. Measurements are approximate and are given as a guide and as such must not be relied on as a statement or representation of fact. Total areas shown are maximum and may vary for each unit within a type. Do not use these measurements for carpets, appliance spaces or items of furniture. Kitchen, bathroom and utility layouts and door swings may differ to build and specific plot sizes and layouts may vary within the same unit type. Hyde reserves the right to make changes to these plans prior to exchange of contracts. For further information regarding specific individual plots, please ask your Sales Consultant.

# Plots 75 & 86

2 bedroom apartment



## Floorplan key

**W** Wardrobe

**UC** Utility cupboard

NB: Washing machine/dryer in kitchen

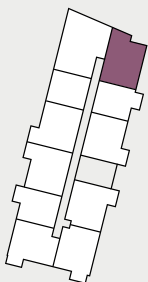


Dimensions	m	ft
Kitchen	4.30 x 2.10	14'1" x 6'11"
Living/Dining Room	3.52 x 5.54	11'7" x 18'2"
Bedroom 1	2.98 x 4.10	9'9" x 13'5"
En Suite	1.65 x 2.09	5'5" x 6'10"
Bedroom 2	2.75 x 4.10	9'0" x 13'5"
Bathroom	1.96 x 2.13	6'5" x 7'0"
<b>Gross Internal Area</b>	<b>74m<sup>2</sup></b>	<b>796ft<sup>2</sup></b>
Balcony	4.16 x 1.60	13'8" x 5'3"

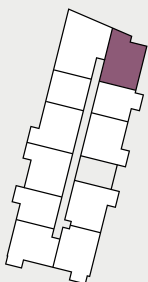
## Locator key



Second Floor  
Plot 86



First Floor  
Plot 75



The floorplans are intended to give a general indication of the proposed floorplan layout. They are not drawn to scale and are not intended to form part of any offer, warranty or representation. Measurements are approximate and are given as a guide and as such must not be relied on as a statement or representation of fact. Total areas shown are maximum and may vary for each unit within a type. Do not use these measurements for carpets, appliance spaces or items of furniture. Kitchen, bathroom and utility layouts and door swings may differ to build and specific plot sizes and layouts may vary within the same unit type. Hyde reserves the right to make changes to these plans prior to exchange of contracts. For further information regarding specific individual plots, please ask your Sales Consultant.

# Plots 78 & 89

2 bedroom apartment



### Floorplan key

**W** Wardrobe

**UC** Utility cupboard

NB: Washing machine/dryer in kitchen

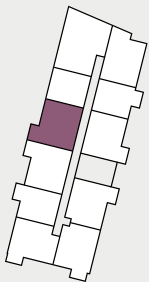


Dimensions	m	ft
Kitchen	4.03 x 2.10	13'3" x 6'11"
Living/Dining Room	3.27 x 5.76	10'9" x 18'11"
Bedroom 1	3.00 x 4.35	9'10" x 14'3"
En Suite	1.65 x 2.06	5'5" x 6'9"
Bedroom 2	2.75 x 4.35	9'0" x 14'3"
Bathroom	2.00 x 2.10	6'7" x 6'11"
<b>Gross Internal Area</b>	<b>74m<sup>2</sup></b>	<b>791ft<sup>2</sup></b>
Balcony	3.40 x 1.60	11'2" x 5'3"

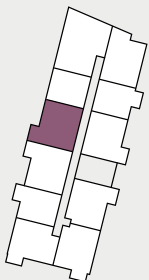
### Locator key



Second Floor  
Plot 89



First Floor  
Plot 78



The floorplans are intended to give a general indication of the proposed floorplan layout. They are not drawn to scale and are not intended to form part of any offer, warranty or representation. Measurements are approximate and are given as a guide and as such must not be relied on as a statement or representation of fact. Total areas shown are maximum and may vary for each unit within a type. Do not use these measurements for carpets, appliance spaces or items of furniture. Kitchen, bathroom and utility layouts and door swings may differ to build and specific plot sizes and layouts may vary within the same unit type. Hyde reserves the right to make changes to these plans prior to exchange of contracts. For further information regarding specific individual plots, please ask your Sales Consultant.

# Plots 79, 90 & 99

2 bedroom apartment



## Floorplan key

**W** Wardrobe

**UC** Utility cupboard

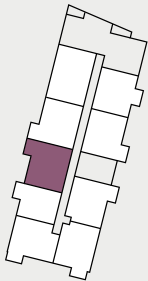
NB: Washing machine/dryer in kitchen



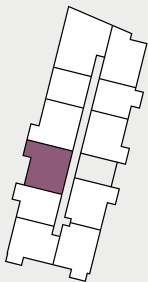
## Locator key



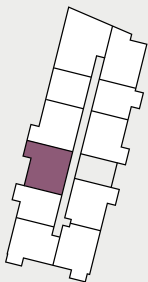
Third Floor  
Plot 99



Second Floor  
Plot 90



First Floor  
Plot 79



Dimensions	m	ft
Kitchen	4.03 x 2.10	13'3" x 6'11"
Living/Dining Room	3.31 x 5.76	10'10" x 18'11"
Bedroom 1	2.96 x 4.35	9'9" x 14'3"
En Suite	1.65 x 2.05	5'5" x 6'9"
Bedroom 2	2.75 x 4.35	9'0" x 14'3"
Bathroom	2.00 x 2.10	6'7" x 6'11"
<b>Gross Internal Area</b>	<b>73m<sup>2</sup></b>	<b>789ft<sup>2</sup></b>
Balcony	3.41 x 1.60	11'2" x 5'3"

The floorplans are intended to give a general indication of the proposed floorplan layout. They are not drawn to scale and are not intended to form part of any offer, warranty or representation. Measurements are approximate and are given as a guide and as such must not be relied on as a statement or representation of fact. Total areas shown are maximum and may vary for each unit within a type. Do not use these measurements for carpets, appliance spaces or items of furniture. Kitchen, bathroom and utility layouts and door swings may differ to build and specific plot sizes and layouts may vary within the same unit type. Hyde reserves the right to make changes to these plans prior to exchange of contracts. For further information regarding specific individual plots, please ask your Sales Consultant.

# Plots 81, 92 & 101

2 bedroom apartment



## Floorplan key

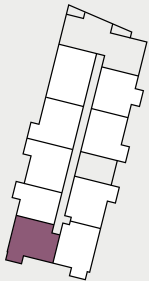
- W** Wardrobe
- UC** Utility cupboard
- W/D** Washing machine/dryer



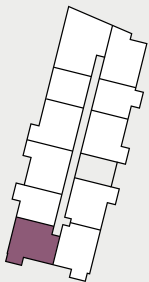
## Locator key



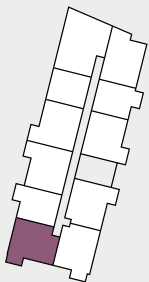
Third Floor  
Plot 101



Second Floor  
Plot 92



First Floor  
Plot 81



Dimensions	m	ft
Kitchen	3.39 x 2.20	11'1" x 7'3"
Living/Dining Room	3.39 x 5.51	11'1" x 18'1"
Bedroom 1	3.20 x 3.75	10'6" x 12'4"
En Suite	1.67 x 2.05	5'6" x 6'9"
Bedroom 2	2.86 x 4.15	9'5" x 13'7"
Bathroom	2.00 x 2.15	6'7" x 7'0"
<b>Gross Internal Area</b>	<b>72m<sup>2</sup></b>	<b>780ft<sup>2</sup></b>
Balcony	3.55 x 1.60	11'8" x 5'3"

The floorplans are intended to give a general indication of the proposed floorplan layout. They are not drawn to scale and are not intended to form part of any offer, warranty or representation. Measurements are approximate and are given as a guide and as such must not be relied on as a statement or representation of fact. Total areas shown are maximum and may vary for each unit within a type. Do not use these measurements for carpets, appliance spaces or items of furniture. Kitchen, bathroom and utility layouts and door swings may differ to build and specific plot sizes and layouts may vary within the same unit type. Hyde reserves the right to make changes to these plans prior to exchange of contracts. For further information regarding specific individual plots, please ask your Sales Consultant.

# Plots 83, 94, 103 & 107\*

2 bedroom apartment



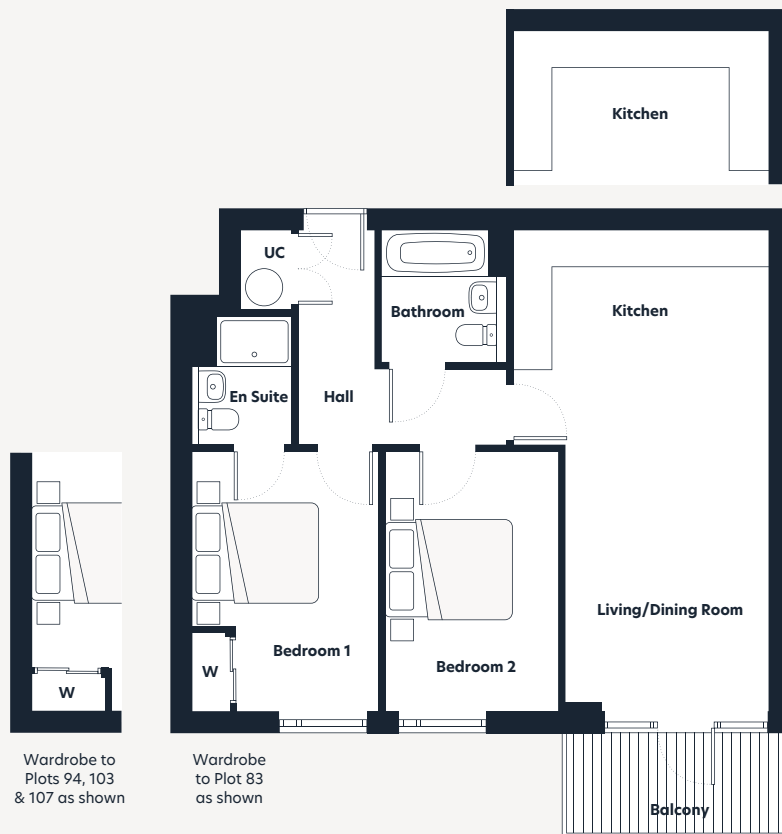
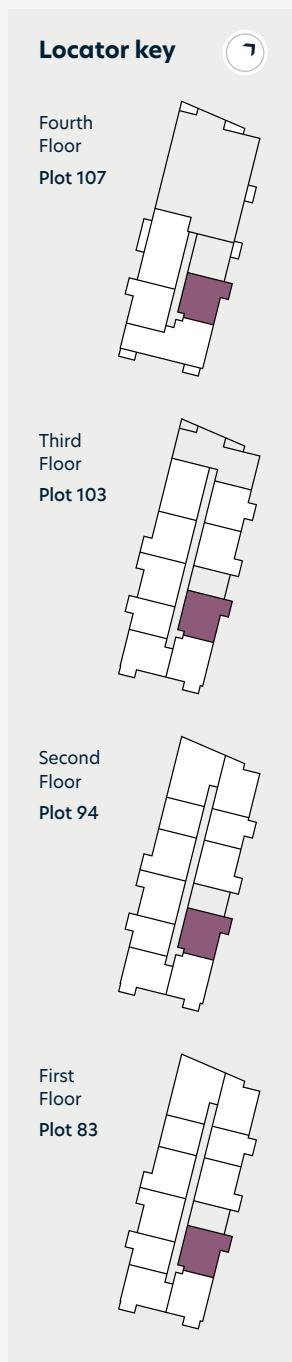
## Floorplan key

**W** Wardrobe

**UC** Utility cupboard

NB: Washing machine/dryer in kitchen

\*Kitchen layout to Plot 107 only



Wardrobe to Plots 94, 103 & 107 as shown

Wardrobe to Plot 83 as shown

Dimensions	m	ft
Kitchen	4.02 x 2.25	13'2" x 7'5"
Living/Dining Room	3.21 x 5.39	10'6" x 17'8"
Bedroom 1	3.00 x 4.10	9'10" x 13'5"
En Suite	1.61 x 2.05	5'3" x 6'9"
Bedroom 2	2.75 x 4.10	9'0" x 13'5"
Bathroom	2.00 x 2.13	6'7" x 7'0"
<b>Gross Internal Area</b>	<b>70m<sup>2</sup></b>	<b>757ft<sup>2</sup></b>
Balcony	3.55 x 1.60	11'8" x 5'3"

The floorplans are intended to give a general indication of the proposed floorplan layout. They are not drawn to scale and are not intended to form part of any offer, warranty or representation. Measurements are approximate and are given as a guide and as such must not be relied on as a statement or representation of fact. Total areas shown are maximum and may vary for each unit within a type. Do not use these measurements for carpets, appliance spaces or items of furniture. Kitchen, bathroom and utility layouts and door swings may differ to build and specific plot sizes and layouts may vary within the same unit type. Hyde reserves the right to make changes to these plans prior to exchange of contracts. For further information regarding specific individual plots, please ask your Sales Consultant.

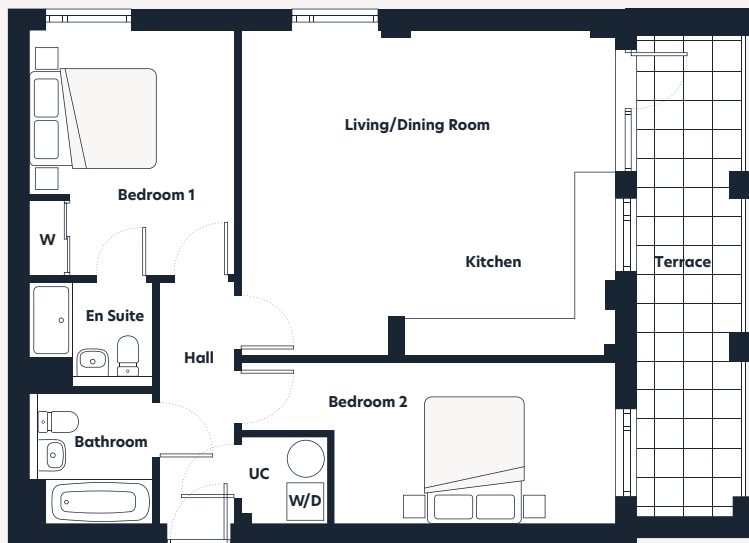
# Plot 97

2 bedroom apartment



### Floorplan key

- W** Wardrobe
- UC** Utility cupboard
- W/D** Washing machine/dryer

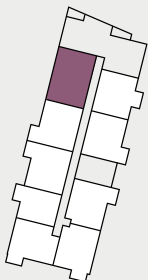


Dimensions	m	ft
Kitchen	3.33 x 2.95	10'11" x 9'8"
Living/Dining Room	5.16 x 5.93	11'8" x 19'5"
Bedroom 1	3.31 x 3.88	10'10" x 12'9"
En Suite	2.02 x 1.65	6'8" x 5'5"
Bedroom 2	2.59 x 2.45	8'6" x 8'0"
Bathroom	2.10 x 2.00	6'11" x 6'7"
<b>Gross Internal Area</b>	<b>75m<sup>2</sup></b>	<b>806ft<sup>2</sup></b>
Terrace	7.66 x 1.67	25'2" x 5'6"

### Locator key



Third Floor  
Plot 97



The floorplans are intended to give a general indication of the proposed floorplan layout. They are not drawn to scale and are not intended to form part of any offer, warranty or representation. Measurements are approximate and are given as a guide and as such must not be relied on as a statement or representation of fact. Total areas shown are maximum and may vary for each unit within a type. Do not use these measurements for carpets, appliance spaces or items of furniture. Kitchen, bathroom and utility layouts and door swings may differ to build and specific plot sizes and layouts may vary within the same unit type. Hyde reserves the right to make changes to these plans prior to exchange of contracts. For further information regarding specific individual plots, please ask your Sales Consultant.

# Plot 98

2 bedroom apartment

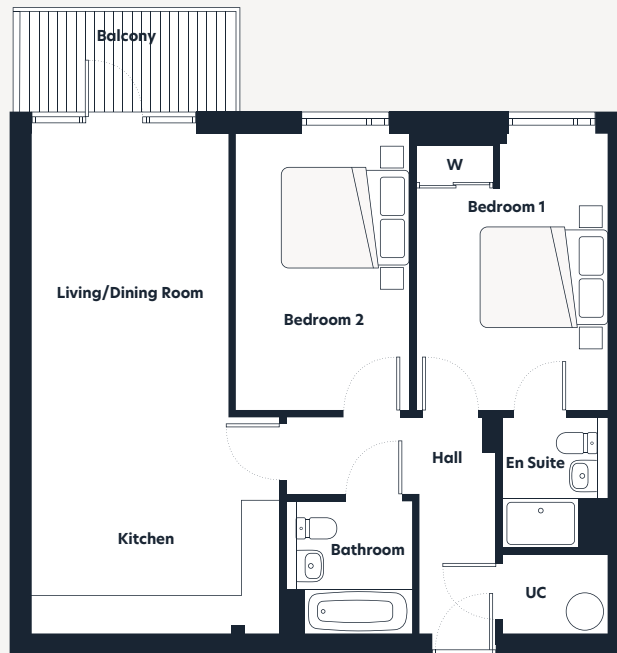


## Floorplan key

**W** Wardrobe

**UC** Utility cupboard

NB: Washing machine/dryer in kitchen

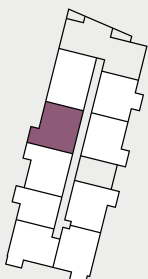


Dimensions	m	ft
Kitchen	4.03 x 2.10	13'3" x 6'11"
Living/Dining Room	3.27 x 5.76	10'9" x 18'11"
Bedroom 1	3.00 x 4.35	9'10" x 14'3"
En Suite	1.65 x 2.06	5'5" x 6'9"
Bedroom 2	2.75 x 4.35	9'0" x 14'3"
Bathroom	2.00 x 2.10	6'7" x 6'11"
<b>Gross Internal Area</b>	<b>74m<sup>2</sup></b>	<b>791ft<sup>2</sup></b>
Balcony	3.40 x 1.60	11'2" x 5'3"

## Locator key



Third Floor  
Plot 98



The floorplans are intended to give a general indication of the proposed floorplan layout. They are not drawn to scale and are not intended to form part of any offer, warranty or representation. Measurements are approximate and are given as a guide and as such must not be relied on as a statement or representation of fact. Total areas shown are maximum and may vary for each unit within a type. Do not use these measurements for carpets, appliance spaces or items of furniture. Kitchen, bathroom and utility layouts and door swings may differ to build and specific plot sizes and layouts may vary within the same unit type. Hyde reserves the right to make changes to these plans prior to exchange of contracts. For further information regarding specific individual plots, please ask your Sales Consultant.

# Plot 105

2 bedroom apartment



### Floorplan key

- W** Wardrobe
- UC** Utility cupboard
- W/D** Washing machine/dryer

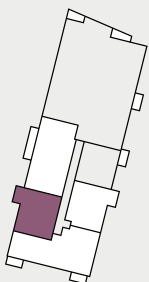


Dimensions	m	ft
Kitchen	4.08 x 2.14	13'5" x 7'0"
Living/Dining Room	3.28 x 5.72	10'9" x 18'9"
Bedroom 1	2.94 x 4.12	9'8" x 13'6"
En Suite	1.60 x 2.14	5'3" x 7'0"
Bedroom 2	2.75 x 4.32	9'0" x 14'2"
Bathroom	1.95 x 2.13	6'5" x 7'0"
<b>Gross Internal Area</b>	<b>73m<sup>2</sup></b>	<b>787ft<sup>2</sup></b>
Balcony	3.55 x 1.60	11'8" x 5'3"

### Locator key



Fourth Floor  
Plot 105



The floorplans are intended to give a general indication of the proposed floorplan layout. They are not drawn to scale and are not intended to form part of any offer, warranty or representation. Measurements are approximate and are given as a guide and as such must not be relied on as a statement or representation of fact. Total areas shown are maximum and may vary for each unit within a type. Do not use these measurements for carpets, appliance spaces or items of furniture. Kitchen, bathroom and utility layouts and door swings may differ to build and specific plot sizes and layouts may vary within the same unit type. Hyde reserves the right to make changes to these plans prior to exchange of contracts. For further information regarding specific individual plots, please ask your Sales Consultant.

# Plots 76 & 87

3 bedroom apartment



## Floorplan key

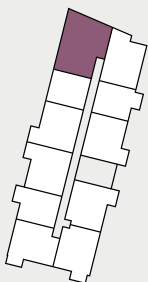
- S** Storage space
- W** Wardrobe
- UC** Utility cupboard
- W/D** Washing machine/dryer



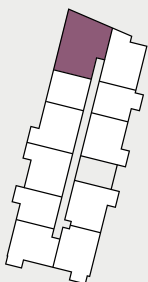
## Locator key

7

Second Floor  
Plot 87



First Floor  
Plot 76



Dimensions	m	ft
Kitchen	4.87 x 1.80	16'0" x 5'11"
Living/Dining Room	6.27 x 4.29	20'7" x 14'1"
Bedroom 1	3.29 x 3.62	10'10" x 11'11"
En Suite	2.09 x 1.65	6'10" x 5'5"
Bedroom 2	2.75 x 4.96	9'0" x 16'3"
Bedroom 3	3.20 x 4.39	10'6" x 14'5"
Bathroom	2.05 x 2.00	6'9" x 6'7"
<b>Gross Internal Area</b>	<b>104m<sup>2</sup></b>	<b>1120ft<sup>2</sup></b>
Balcony	3.22 x 1.47	10'7" x 4'10"

The floorplans are intended to give a general indication of the proposed floorplan layout. They are not drawn to scale and are not intended to form part of any offer, warranty or representation. Measurements are approximate and are given as a guide and as such must not be relied on as a statement or representation of fact. Total areas shown are maximum and may vary for each unit within a type. Do not use these measurements for carpets, appliance spaces or items of furniture. Kitchen, bathroom and utility layouts and door swings may differ to build and specific plot sizes and layouts may vary within the same unit type. Hyde reserves the right to make changes to these plans prior to exchange of contracts. For further information regarding specific individual plots, please ask your Sales Consultant.

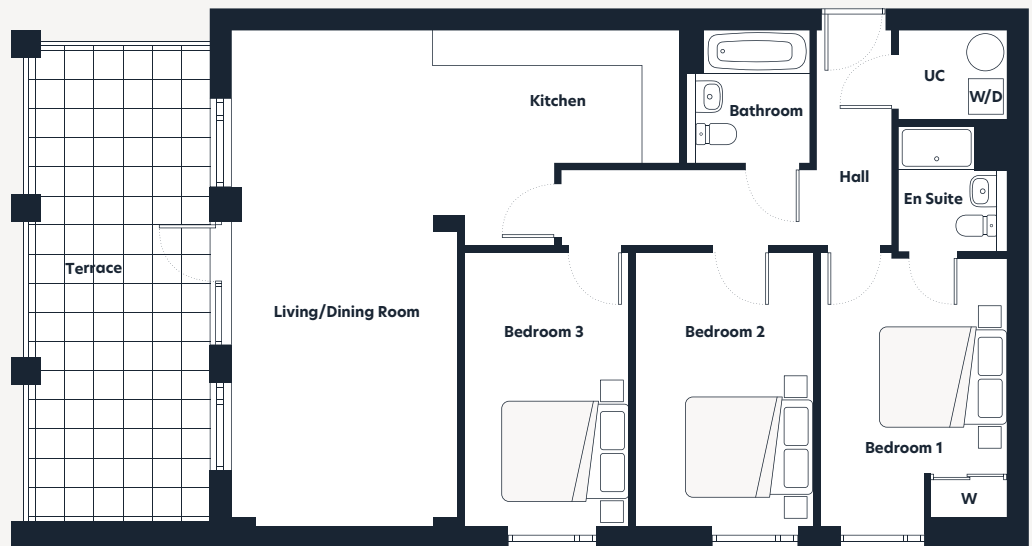
# Plot 104

3 bedroom apartment



### Floorplan key

- W** Wardrobe
- UC** Utility cupboard
- W/D** Washing machine/dryer

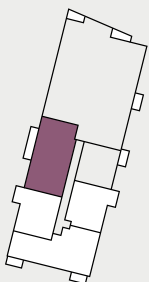


Dimensions	m	ft
Kitchen	3.52 x 2.14	11'7" x 7'0"
Living/Dining Room	7.86 x 3.55	25'9" x 11'8"
Bedroom 1	2.98 x 4.32	9'9" x 14'2"
En Suite	1.73 x 1.98	5'8" x 6'6"
Bedroom 2	2.83 x 4.32	9'3" x 14'2"
Bedroom 3	2.63 x 4.32	8'8" x 14'2"
Bathroom	1.95 x 2.13	6'5" x 7'0"
<b>Gross Internal Area</b>	<b>98m<sup>2</sup></b>	<b>1058ft<sup>2</sup></b>
Terrace	7.52 x 2.91	24'8" x 9'7"

### Locator key



Fourth Floor  
Plot 104



The floorplans are intended to give a general indication of the proposed floorplan layout. They are not drawn to scale and are not intended to form part of any offer, warranty or representation. Measurements are approximate and are given as a guide and as such must not be relied on as a statement or representation of fact. Total areas shown are maximum and may vary for each unit within a type. Do not use these measurements for carpets, appliance spaces or items of furniture. Kitchen, bathroom and utility layouts and door swings may differ to build and specific plot sizes and layouts may vary within the same unit type. Hyde reserves the right to make changes to these plans prior to exchange of contracts. For further information regarding specific individual plots, please ask your Sales Consultant.

# Plot 106

3 bedroom apartment



## Floorplan key

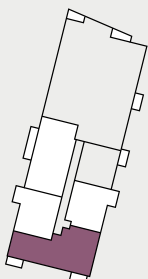
- S** Storage space
- W** Wardrobe
- UC** Utility cupboard
- W/D** Washing machine/dryer



## Locator key



Fourth  
Floor  
Plot 106



Dimensions	m	ft
Kitchen	3.24 x 2.40	10'8" x 7'10"
Living/Dining Room	5.23 x 4.84	17'2" x 15'11"
Bedroom 1	2.98 x 4.10	9'9" x 13'5"
En Suite	1.65 x 2.05	5'5" x 6'9"
Bedroom 2	3.16 x 4.10	6'9" x 13'5"
Bedroom 3	2.95 x 4.10	9'8" x 13'5"
Bathroom	2.28 x 2.09	7'6" x 6'10"
<b>Gross Internal Area</b>	<b>101m<sup>2</sup></b>	<b>1087ft<sup>2</sup></b>
Terrace	5.39 x 4.71	17'8" x 15'5"

The floorplans are intended to give a general indication of the proposed floorplan layout. They are not drawn to scale and are not intended to form part of any offer, warranty or representation. Measurements are approximate and are given as a guide and as such must not be relied on as a statement or representation of fact. Total areas shown are maximum and may vary for each unit within a type. Do not use these measurements for carpets, appliance spaces or items of furniture. Kitchen, bathroom and utility layouts and door swings may differ to build and specific plot sizes and layouts may vary within the same unit type. Hyde reserves the right to make changes to these plans prior to exchange of contracts. For further information regarding specific individual plots, please ask your Sales Consultant.

## What our customers say

"This apartment is a long-term investment, and I am already planning to increase my equity share in a couple of years, and eventually buy my home outright."

Purchaser at Rochester Riverside



## Buying your new home

Our in-house team of sales consultants are dedicated to providing exceptional service to all our customers and we aim to make the experience of buying your new home with us as smooth, enjoyable and straightforward as possible. From your initial enquiry, through to handing you the keys to your new home, our friendly and knowledgeable team are available both in person and online, to answer your questions and help you find the home buying option that's right for you.

### Shared ownership

Shared ownership is a government-backed scheme designed to enable buyers to purchase a percentage of the equity, which is affordable to them, in a new home. The buyer then pays a subsidised rent on the unsold equity and a monthly service charge to Hyde. This means that the initial deposit required is also smaller than when you buy your home outright. We ensure we provide the same high-quality product with the same specification as buying outright.

### Staircasing: Buying more shares

Staircasing is the process through which you can increase your share of a property over a period of time. To find out more about staircasing and buying a shared ownership home please visit:

» [hydenewhomes.co.uk/shared-ownership](https://hydenewhomes.co.uk/shared-ownership)



To find out more about the home buying options we offer visit [hydenewhomes.co.uk](https://hydenewhomes.co.uk)

### My Hyde

Set up an account on the hyde new homes website and personalise your home buying journey with us:

- ✓ Save and share your searches, favourite properties and developments
- ✓ Create and keep track of your shared ownership application
- ✓ Manage your appointments

## About Hyde New Homes


Hyde New Homes is part of the Hyde Group, one of England's largest housing associations. We are proud of the homes we build and bring home ownership within reach of many more people than could otherwise afford one. To find out more about the Hyde Group, visit [hyde-housing.co.uk](http://hyde-housing.co.uk)

### Gold standard service

Our ambition is to be a truly customer-driven housing provider. This means communicating clearly and listening to you throughout your home buying journey, from the initial viewing to when you move into your new home. Through the use of technology, you can view, secure and complete your purchase from the comfort of your sofa. Our aim is to make your experience smooth and enjoyable. We also work hard to ensure you settle in comfortably and our Product Quality Team will be in touch with you regularly over the first twelve months. During this time, we also engage an independent research company called In-house to conduct feedback surveys on our behalf and consistently review this feedback to continue improving our service to you.

Hyde New Homes has achieved Gold at the Customer Satisfaction Awards for the thirteenth consecutive year. The 2026 award criteria focuses on overall homebuyer satisfaction based on what is important to customers at every stage of their home buying journey: communication throughout the buying process, condition of the home at handover, defect resolution, and likelihood to recommend to others.

Hyde New Homes also achieved the coveted Net Promoter Score of 71.9, reflecting high levels of customer recommendation and underlining the company's ongoing commitment to delivering an exceptional home buying experience.



**WHAT OUR CUSTOMERS SAY**

"As an environmentally-conscious person and trying to save money where I can, the environmentally-friendly features at Spring Acres were a real bonus. I'm looking to get an electric vehicle in the future, so the chargers were a real selling point for me."

Purchaser at Spring Acres, Sittingbourne

**The Hyde Difference**

- Over 90% customer satisfaction for thirteen consecutive years
- High specification as standard
- 999 year lease
- Quality fitted flooring included
- Contemporary kitchens with integrated appliances
- Expertly designed communal spaces

# Apartment locator



## Finding your perfect home just came one step closer

The Stour Collection is set across two blocks, Mallard House and Pipistrelle House.

Locate your dream home at Riverside Square now.

### Locator key

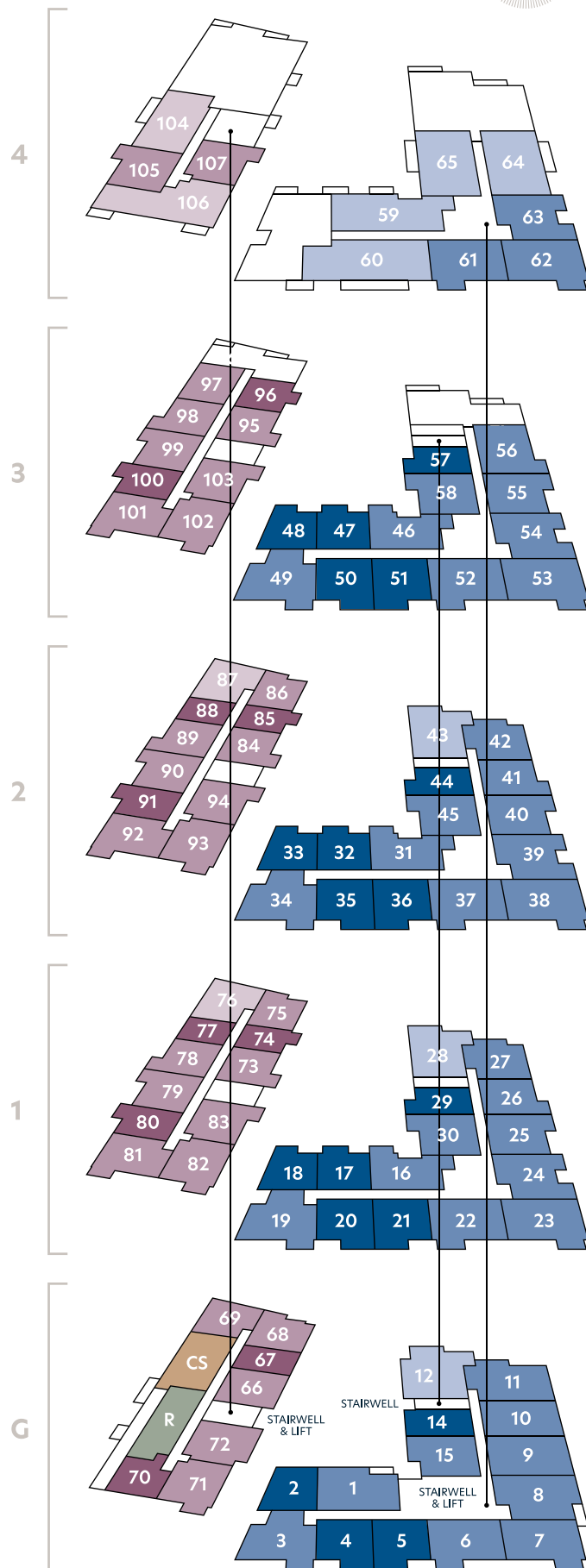
#### Mallard House

- One Bedroom
- Two Bedroom
- Three Bedroom

#### Pipistrelle House

- One Bedroom
- Two Bedroom
- Three Bedroom

- Cycle store
- Refuse/recycling







## **Riverside Square: The Stour Collection**

Finding your perfect home just  
came one step closer

The Stour Collection at Riverside Square features a selection of 1, 2 & 3 bedroom apartments available through shared ownership boasting modern architecture, sleek interiors and contemporary finishes.



# Hyde New Homes

## Directions to Riverside Square, Canterbury

Sat Nav Address: CT1 1JX



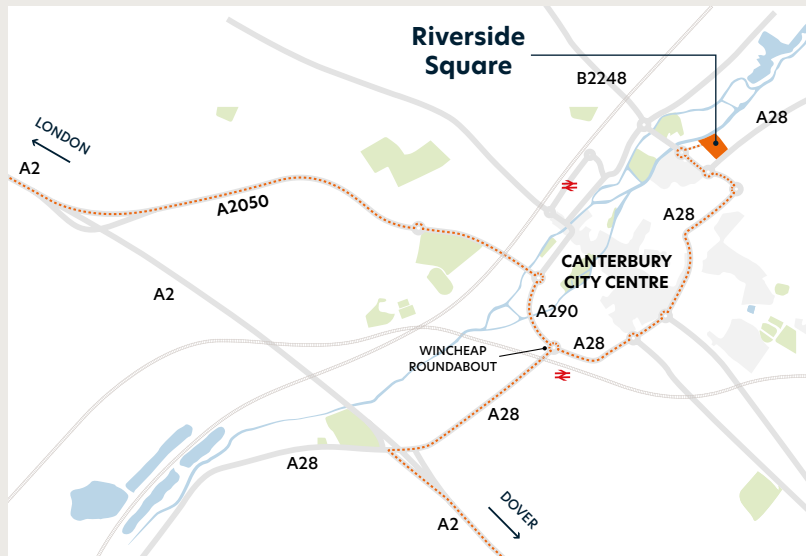
### Driving from A2

#### Westbound (From Dover)

- From the A2 take the A28 towards Canterbury. Continue on the A28 by turning right at the Wincheap Roundabout.
- Continue North East on the A28 over 3 further roundabouts.
- At the next roundabout continue ahead onto B2248 Kingsmead Road.
- Turn right at the next roundabout into the development.

#### Eastbound (From London)

- From the A2 take the A2050 for Harbledown and Canterbury. Continue ahead at the first roundabout onto Rheims Way.
- Turn right at the next roundabout onto the A290 Rheims Way.
- This will bring you to the Wincheap Roundabout.
- Continue ahead onto the A28 and follow the steps in orange above.



[hydenewhomes.co.uk](https://www.hydenewhomes.co.uk)

01732 526444

Details correct at time of publication: April 2026

Disclaimer: Computer Generated Images are indicative only. Floorplans are not to scale and are indicative only. Location of windows, doors, kitchen units appliance spaces and bathroom fittings may differ. Doors may swing in the opposite direction to that shown on selected units. Windows may open differently or be fixed. All measurements have been prepared from preliminary plans and are intended to give a general indication of the proposed development and the size and layout of individual plots. Measurements shown are maximum room measurements. Total areas shown are maximum and may vary for each unit within a type. All dimensions are quoted in conformity with RICS (GIA EIFA) code of measuring practice (6th edition). The information in this document is indicative and is intended to act as a guide only as to the finished product. Accordingly, due to the Hyde New Homes policy of continuous improvement, the finished product may vary from the information provided. These particulars should not be relied upon as accurately describing any of the specific matters described by any order under the Consumer Protection From Unfair Trading regulations 2008. This information does not constitute a contract or warranty. The dimensions provided on plans are subject to variations and are not intended to be used for carpet sizes, appliance sizes or items of furniture. Specifications are subject to change.